

# Seeing Orange (Barrels)? Think Progress

## OUR COMMITMENT TO YOU:

Improve safety, ease congestion, expand access to business and shopping, and provide the infrastructure for continued economic development to support the quality of life in Clermont County.

It may not be your first instinct, but we hope when you see those orange barrels, you'll think of the progress that's taking place throughout Clermont County.

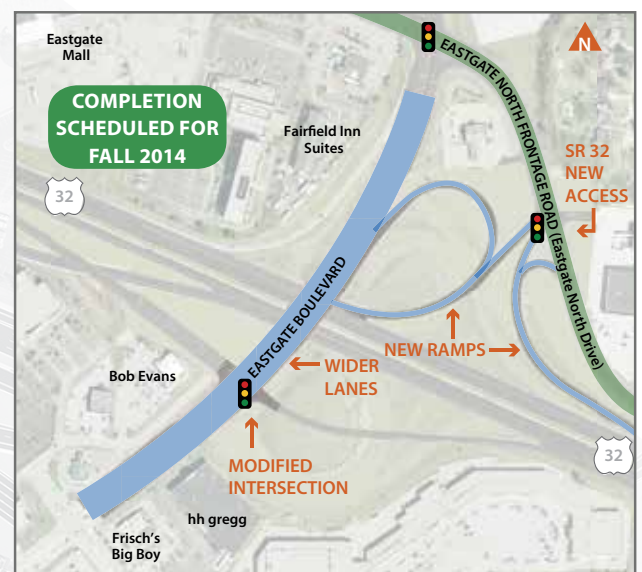
Phase 1 of our work is COMPLETED. Phase 2 will be completed by the fall of this year, and Phase 3 – the major improvements at the I-275/SR 32 Interchange – is well underway.

We recognize that while our work to improve safety and ease congestion is underway, you may need a little extra travel time to get to your destination. We appreciate your patience, and hope the information outlined in this newsletter will be helpful in updating you on the progress we're making to improve the infrastructure and support economic development in Clermont County for many years to come.

**PHASE 1: EASTGATE NORTH FRONTAGE ROAD IMPROVEMENTS**



**PHASE 2: RECONSTRUCTION OF EASTGATE BOULEVARD OVER SR 32**



## Completion Timeline for Eastgate Area Projects

| 2013                                | 2014  | 2015  | 2016                           |
|-------------------------------------|---|---|--------------------------------|
| FALL                                | FALL  | SUMMER FALL   | FALL                           |
| <p>Eastgate North Frontage Road</p> | <p>Clough Pike Widening</p> <p>Reconstruction of Eastgate Blvd over SR 32</p> | <p>Ivy Pointe Extension Eastgate South Drive Roundabout</p> <p>I-275/SR 32 Interchange Improvements</p> | <p>Aicholtz Road Connector</p> |

## LOCAL NETWORK IMPROVEMENTS

The improvements being made on mainline 32 rely heavily upon the efficiency of the local roadway network. If the roads that support traffic getting to and from the interchange system are not functioning effectively, the impact of the investments being made on SR 32 will be less significant. Getting in and out of residential neighborhoods, and making sure drivers have a safe and efficient commute once they exit mainline 32 or the highway interchange system that feeds into Clermont County is an important component of our overall transportation planning and improvement work. Below are several projects that will improve local access and connections.

### PROJECT: Clough Pike Widening

**PROJECT SCOPE:** The Clough Pike widening project is adding a third travel lane along a 1.3 mile section of Clough Pike, between Mount Carmel Tobasco Road and Glen Este-Withamsville Road. A center turn lane is being added, as well as a sidewalk along the north side of the road. Upgrades are being made to nearby traffic signals, and drainage improvements will also be completed along the project corridor.

**PROJECT STATUS:** Under construction

**ESTIMATED COMPLETION DATE:** Fall 2014

**ESTIMATED CONSTRUCTION COST:** \$6.5 million

**COMMUNITY BENEFIT:** In addition to reduced congestion, less "stop-n-go" traffic and improved safety for drivers, a new sidewalk will provide better pedestrian access to schools, churches, and parks in the project area.



### PROJECT: Eastgate South Drive Roundabout

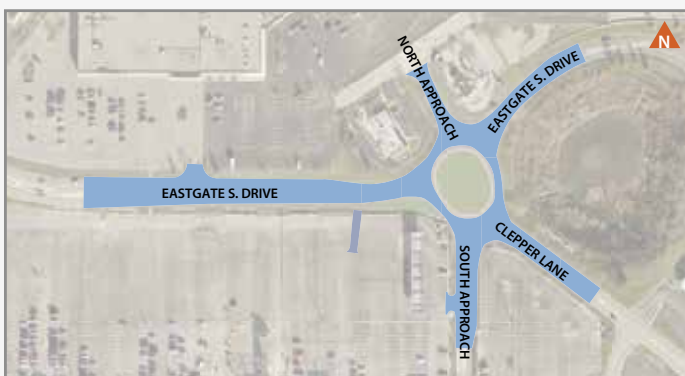
**PROJECT SCOPE:** Located in Union Township, the intersection of Eastgate South Drive and Clepper Lane serves traffic coming from five separate entry points (three public roadways and two private property drives). This project will remove the existing signalized intersection and replace traffic signals with a roundabout. The project will extend an additional 500 feet from the center of the intersection in each direction, and additional work will be completed along Clepper Lane to create a landscaped median and center turn lane.

**PROJECT STATUS:**  
Starts Fall 2014

**ESTIMATED COMPLETION DATE:**  
Summer 2015

**ESTIMATED CONSTRUCTION COST:** \$900,000

**COMMUNITY BENEFIT:** The roundabout will improve the flow of traffic, enhance safety and reduce congestion in this busy retail area.



### PROJECT: Ivy Pointe Extension

**PROJECT SCOPE:** The Ivy Pointe project will extend the existing roadway approximately a quarter of a mile beyond the intersection of Ferguson Drive and Ivy Pointe Boulevard to a new connection with Aicholtz Road.

**PROJECT STATUS:**  
Starts Fall 2014

**ESTIMATED COMPLETION DATE:**  
Summer 2015

**ESTIMATED CONSTRUCTION COST:**  
\$1.75 million

**COMMUNITY BENEFIT:** This extension will improve access and provide better service to traffic that will be generated by the new Cincinnati Children's Hospital development. This road improvement will also ease congestion on Eastgate Boulevard and provide better connectivity for the entire area.





## EASTGATE AREA IMPROVEMENTS: A PLANNED, PHASED APPROACH TO CONSTRUCTION

The transportation improvements taking place in the Eastgate area are occurring in three coordinated phases.

The construction of each project builds upon the next. The completed Eastgate North Frontage Road project paved the way for the work at Eastgate Boulevard, which supports the work now taking place at the I-275/SR 32 Interchange.

Between now and the end of the year, multiple lane shifts and ramp closures will be necessary to facilitate this work (see map).

A map depicting how the final configuration will look once construction is complete is available on [GoClermont.org](http://GoClermont.org), on the I-275/SR 32 Interchange Improvements project page.

### I-275/SR 32 Interchange Improvements



### PROJECT: Phase 3: I-275/SR 32 Interchange Improvements

**PROJECT SCOPE:** These improvements represent the most significant change to traffic patterns in the area. Improvements to the I-275/SR 32 Interchange will address a variety of problems associated with the existing interchanges including: high accident rates; increasing traffic and congestion; and inappropriately spaced roadway access points that require motorists to merge quickly and weave in between accelerating traffic. Planned improvements include: widening portions of SR 32 from Old SR 74 to Eastgate Square Drive; constructing new ramps to provide new access to SR 32 from I-275, as well as new ramps and structures under I-275 that will allow for the Aicholtz Road Connector; improving safety by increasing the spacing distance between on and off ramps to eliminate weaving traffic.

**PROJECT STATUS:**  
Under Construction

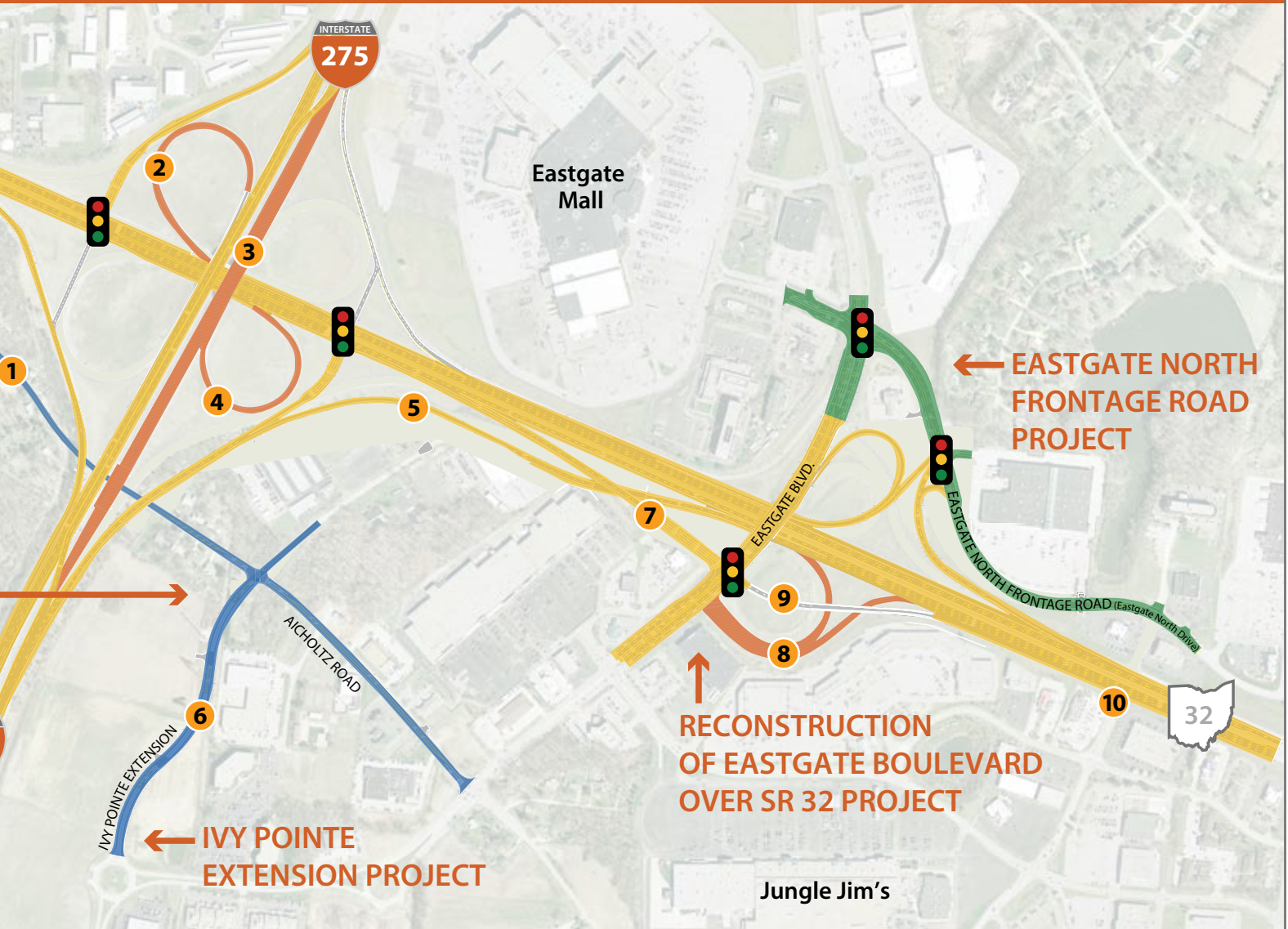
**ESTIMATED COMPLETION DATE:**  
Fall 2015

**ESTIMATED CONSTRUCTION COST:** \$46.2 million

**COMMUNITY BENEFIT:** The I-275/SR 32 Interchange improvements are a well-coordinated series of projects that have been designed to serve current as well as projected travel demand, which simply means that project managers have anticipated planned growth in the area and these improvements will support potential changes. Importantly, improvements will also reduce congestion and delay, and improve roadway safety.



## Projects: Interim Construction Map, June 2014 - December 2014



### PROJECT: Aicholtz Road Connector

**PROJECT SCOPE:** This project will reconnect Aicholtz Road between Eastgate Boulevard/Ferguson Drive and Old SR 74. The new portion of the roadway will travel underneath I-275.

**PROJECT STATUS:**  
Starts July 2015

**ESTIMATED COMPLETION DATE:**  
Fall 2016

**ESTIMATED CONSTRUCTION COST:**  
\$6.25 million

**COMMUNITY BENEFIT:** This project will reestablish a vital link in the Eastgate area's roadway network, help reduce congestion on SR 32 and improve access and mobility for local residents and businesses.



GoClermont.org

## AROUND THE COUNTY

Major improvement work is happening throughout Clermont County. Even beyond the Eastgate retail and shopping hub, transportation planners are working to improve access and travel throughout the county.

The Ohio Department of Transportation (ODOT) is currently working on two important widening projects that will make our roadways safer.



### PROJECT: SR 125 Widening, Independence Drive / Hopper Hill Road to Nine Mile Road

**PROJECT SCOPE:** Improvements are being made to SR 125 between Independence Drive/Hopper Hill Road and Nine Mile Road, adding dedicated right turn lanes at Mt. Carmel Tobasco Road, Independence Drive and Commercial Boulevard/Nine Mile Road. The project is also widening Mt. Carmel Tobasco Road to add an additional left turn lane onto eastbound SR 125. Access to business and retail centers located within the project area will be adjusted to improve the flow of traffic and drainage system upgrades are also being made.

**PROJECT STATUS:**

Under construction

**ESTIMATED COMPLETION DATE:**

Late Fall 2014

**ESTIMATED CONSTRUCTION COST:**

\$3.46 million

**COMMUNITY BENEFIT:**

The improvements being completed along this stretch of SR 125 will help reduce congestion, making travel through the area easier and safer.

### PROJECT: SR 28/Branch Hill Guinea Pike Improvements

**PROJECT SCOPE:** This project will expand SR 28 between Branch Hill Guinea Pike and Smith Road to provide room for left-turn lanes at roadway intersections.

**PROJECT STATUS:**

Starts Summer 2014

**ESTIMATED COMPLETION DATE:**

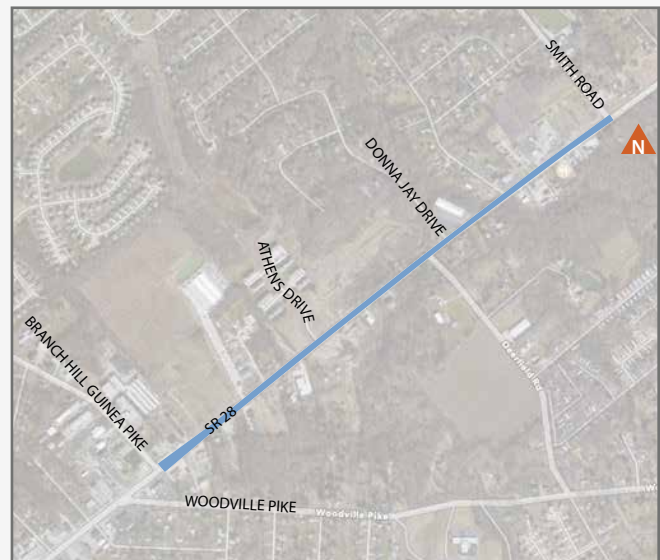
Fall 2015

**ESTIMATED CONSTRUCTION COST:**

\$3.5 million

**COMMUNITY BENEFIT:**

By providing dedicated left turn lanes, this project is designed to reduce the number of turning accidents in this stretch of road and improve the flow of traffic.





## OTHER CLERMONT COUNTY PROJECTS

The CCTID works to improve the quality of life for Clermont County residents by stimulating economic development through transportation improvements. Below is a comprehensive list of the projects the CCTID and its partners are currently managing to make it safer and easier to get around, as well as a list of recently completed projects.

### Current Projects

- ▶ Reconstruction of Eastgate Boulevard over SR 32
- ▶ I-275/SR 32 Interchange Improvements
- ▶ Clough Pike Widening
- ▶ Aicholtz Road Connector
- ▶ Ivy Pointe Extension
- ▶ SR 125 Widening, Independence/Hopper Hill to Nine Mile Rd
- ▶ US 50/SR 450/Eastman Drive Improvements
- ▶ SR 28/Branch Hill Guinea Pike Improvements
- ▶ Old SR 74 Widening, Olive Branch-Stonelick to Armstrong Blvd Improvements
- ▶ Intelligent Transportation System (traffic signal upgrades) – Phase II
- ▶ Wards Corner Widening Project
- ▶ Wolfpen Pleasant Hill Road Safety Improvements
- ▶ Old SR 74 Widening at East Tech Drive
- ▶ Merwin-Ten Mile at SR 125 Intersection
- ▶ McMann Road Widening

### Recently Completed Projects

- ▶ Eastgate North Frontage Road Improvements
- ▶ Beechwood Road Extension
- ▶ Laurel Drive Culvert Replacement
- ▶ Aicholtz Road Profile Improvement
- ▶ Intelligent Transportation System (traffic signal upgrades) – Phase I
- ▶ Wolfpen Pleasant Hill Improvements
- ▶ Business 28 – Phase I Improvements
- ▶ SR 125 Improvements
- ▶ SR 131 at McCormick Trail Widening
- ▶ SR 28 Improvements: I-275 to Castleberry
- ▶ US 50/SR 131 Milford Parkway Improvements

### MEMBERS OF THE CCTID:

- ▶ **Larry Fronk** – Mr. Fronk is the Miami Township Administrator, and is Chair of the CCTID.
- ▶ **Matthew VanSant** – Mr. VanSant is President/CEO of the Clermont County Chamber of Commerce, and is Vice-Chair of the CCTID.
- ▶ **Patrick Manger, P.E., P.S.** – Mr. Manger is the Clermont County Engineer, and is Secretary-Treasurer of the CCTID.
- ▶ **Ken Geis** – Mr. Geis is the Union Township Administrator, and is a member of the CCTID.
- ▶ **Jeff Wright** – Mr. Wright is the City Manager for the City of Milford, and is a member of the CCTID.
- ▶ **John Becker** – Mr. Becker represents the 65th House District of Ohio, and is an Ex-Officio Member of the CCTID.
- ▶ **Joseph Uecker** – Mr. Uecker represents the 14th Senate District of Ohio, and is an Ex-Officio Member of the CCTID.

### CONTACT US

Clermont County  
Transportation  
Improvement  
District

2381 Clermont  
Center Drive  
Batavia, OH  
45103

### DIRECTIONS

From I-275, exit  
at OH-32 East  
toward Batavia.  
Turn left onto  
Bauer Road. Take  
the first right  
onto Clermont  
Center Drive.



Project Hotline  
513-835-2417



GoClermont.org



Like us on  
**Facebook**



**twitter**  
FOLLOW US