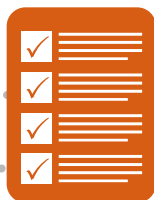


## The Clermont County Transportation Improvement District: Speaking With One Voice to Accomplish More for Our Area

The Clermont County Transportation Improvement District (CCTID) works across geographic and political lines to improve the quality of life for Clermont County residents by stimulating economic development through regional transportation improvements.



The CCTID is made up of **five members** who represent various organizations in Clermont County.



Their **goal** is to bring together multiple groups, develop **one agenda**, and



**Speak with one voice** to local, regional, state and federal decision makers so that numerous **projects can be completed** in a coordinated fashion,



and the **resources** of those agencies can be **leveraged to generate funding** for projects that might not otherwise have been able to have been completed.

*"Employers, their employees and potential workers from throughout the region are looking to Clermont County as a hub for economic development and strategic growth. At the same time, our area is an increasingly popular destination for residents and families. It's our job to make sure the infrastructure is in place to support safe and efficient travel."*

– Pat Manger, Clermont County Engineer & CCTID Board Member

### MEMBERS OF THE CCTID

- ▼ **Larry Fronk** – Mr. Fronk is the Miami Township Administrator, and is Chair of the CCTID.
- ▼ **Matthew VanSant** – Mr. VanSant is President/CEO of the Clermont County Chamber of Commerce, and is Vice-Chair of the CCTID.
- ▼ **Patrick Manger, P.E., P.S.** – Mr. Manger is the Clermont County Engineer, and is Secretary-Treasurer of the CCTID.
- ▼ **Ken Geis** – Mr. Geis is the Union Township Administrator, and is a member of the CCTID.
- ▼ **Jeff Wright** – Mr. Wright is the City Manager for the City of Milford, and is a member of the CCTID.
- ▼ **John Becker** – Mr. Becker represents the 65th House District of Ohio, and is an Ex-Officio Member of the CCTID.
- ▼ **Joseph Uecker** – Mr. Uecker represents the 14th Senate District of Ohio, and is an Ex-Officio Member of the CCTID.

### CONTACT US

Clermont County Transportation Improvement District  
2381 Clermont Center Drive  
Batavia, OH 45103  
info@GoClermont.org



Project Hotline  
513-835-2417



GoClermont.org



Like us on  
Facebook



twitter  
FOLLOW US



# Eastgate Area Improvements: “Rounding Third And Heading For Home!”

Although a few orange barrels are still around, a significant amount of progress has been made in the Eastgate area. As the final components of work begin, the good news is we’re rounding third and heading for home!

The transportation improvements taking place in the Eastgate area have been occurring in three coordinated phases:

- PHASE 1

Improvements at Eastgate North Frontage Road

COMPLETE
- PHASE 2

Reconstruction of Eastgate Boulevard over SR 32

COMPLETE
- PHASE 3

Major improvements at the I-275/SR 32 Interchange are well underway and will be completed by the fall of 2015

IN PROGRESS

## I-275/SR 32 Interchange Improvements – Final Configuration



### PHASE 1 Eastgate North Frontage Road Improvements



### PHASE 2 Reconstruction of Eastgate Boulevard Over SR 32



The improvements at the I-275/SR 32 Interchange represent a significant change to traffic patterns in the area. They address a variety of problems including high accident rates, increasing traffic and congestion, and inappropriately spaced roadway access points that required drivers to merge quickly and weave in between accelerating traffic.

To date, multiple new ramps have been built to provide improved access to and from SR 32 & I-275, and to allow traffic to move more easily from the interstate to local destinations.

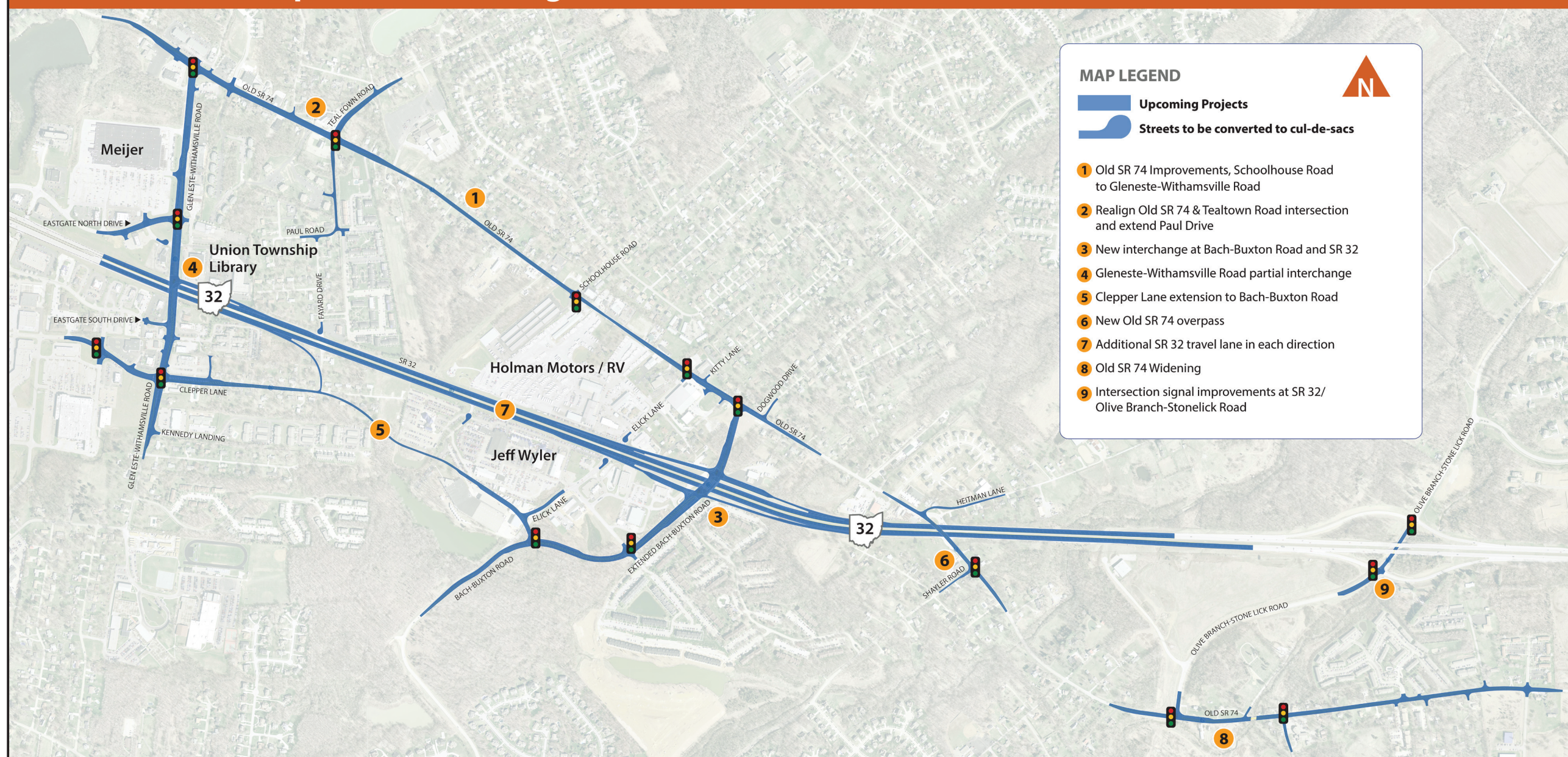
In 2015, Aicholtz Road will be reconstructed between Eastgate Boulevard and Mt. Carmel Tobasco Road. The new portion of the roadway will travel underneath I-275, and reestablish a vital link in the Eastgate area’s roadway network, help reduce congestion on SR 32 and improve access and mobility for local residents and businesses.



# Progress Continues: SR 32 Improvements, Eastgate To Batavia

The Clermont County Transportation Improvement District (CCTID) is working with the Ohio Department of Transportation (ODOT) to make improvements to SR 32, one of Ohio's most important corridors for commerce and travel. The result of significant public input and study, the project team has identified plans for improvements to be made along the SR 32 corridor between Eastgate Boulevard and Olive Branch-Stonelick Road.

## SR 32 Area Improvements, Eastgate to Batavia



This project, a component of the Eastern Corridor Program of projects ([www.EasternCorridor.org](http://www.EasternCorridor.org)), has been developed to better support increasing levels of traffic, reduce congestion and improve roadway safety. These improvements will make it easier and safer to get around, while improving connectivity and providing the infrastructure needed to support the significant flow of people, goods and services that move through this area. Project elements include:

- Widening SR 32 by adding a travel lane in each direction
- Removing traffic signals and modifying local access between Eastgate Boulevard and Olive Branch-Stonelick Road

- Constructing a new interchange near Elick Lane/Bach Buxton Road which includes a bridge over SR 32
- Maintaining access to Gleneste-Withamsville Road via a westbound exit ramp to Gleneste-Withamsville Road and an eastbound exit to Clepper Lane
- Constructing a new bridge to allow Gleneste-Withamsville Road to travel over SR 32
- Extending Clepper Lane east to Bach Buxton Road
- Making additional local roadway network improvements to better connect Old SR 74, Gleneste-Withamsville Road and Clepper Lane with SR 32
- Widening Old SR 74 from Olive Branch-Stonelick Road to Armstrong Boulevard



GoClermont.org



# Recently Completed In 2014

**The Clermont County Transportation Improvement District (CCTID) has been hard at work, improving travel and making local roadways safer. Where appropriate, the CCTID also works to integrate pedestrian and bicycle paths into standard roadway designs in order to support shared-use networks.**

**The following projects were completed in 2014. For a full list of projects completed by the CCTID, please visit [www.GoClermont.org](http://www.GoClermont.org).**

## **CLOUGH PIKE WIDENING**

The Clough Pike Widening Project added a third travel lane along a 1.3 mile section of Clough Pike, between Mt. Carmel Tobasco Road and Gleneste-Withamsville Road. A center turn lane was added, as well as a sidewalk along the north side of the road. Upgrades were made to nearby traffic signals, and drainage improvements were completed along the project corridor.

## **SR 28/BRANCH HILL GUINEA PIKE IMPROVEMENTS**

Important safety and pedestrian improvements were made on Branch Hill Guinea Pike, including wider travel lanes, a new center turn lane and improved pedestrian access with a sidewalk along the east side of the road. This work was part of a coordinated regional plan to address travel needs for local businesses and retail properties, as well as the large number of residential homeowners in this area.

## **US 50/SR 131 MILFORD PARKWAY IMPROVEMENTS**

This project involved widening portions of both US 50 and SR 131, making improvements to the turning lanes to improve the flow of traffic through the area, and traffic signal timing upgrades. It also provided a sidewalk extension to create better access to the River's Edge/Milford Commerce Park area.

## **WARDS CORNER WIDENING PROJECT**

This project included the construction of a new section of roadway off of Wards Corner Road, and included widening a portion of Wards Corner to three lanes to include a turn lane. This project has reduced congestion and minimized delays in the area.

## **INTELLIGENT TRANSPORTATION SYSTEM (TRAFFIC SIGNAL UPGRADES) – PHASE II**

This project involved the installation of new technology in more than 50 traffic signals across the county. In addition to upgrading to energy-efficient LED displays and providing battery backup to the new signals, new software connects and synchronizes the signals to better monitor and control the flow of traffic through a given intersection. So rather than sitting at a light for two minutes when no traffic is coming the other way, just because that's how the signal has been timed, the new signals can monitor traffic in a certain direction and adjust signal timing accordingly.

## **RECONSTRUCTION OF EASTGATE BOULEVARD OVER SR 32 (EASTGATE IMPROVEMENTS, PHASE 2)**

This project included the reconstruction and widening of the Eastgate Boulevard structure over SR 32 and the relocation and reconstruction of several ramps to and from SR 32.



*The Clough Pike Widening Project includes a new sidewalk, which provides better pedestrian access to schools, churches and parks in the project area*



*The Wards Corner Widening Project is one of the multiple CCTID projects completed in 2014*