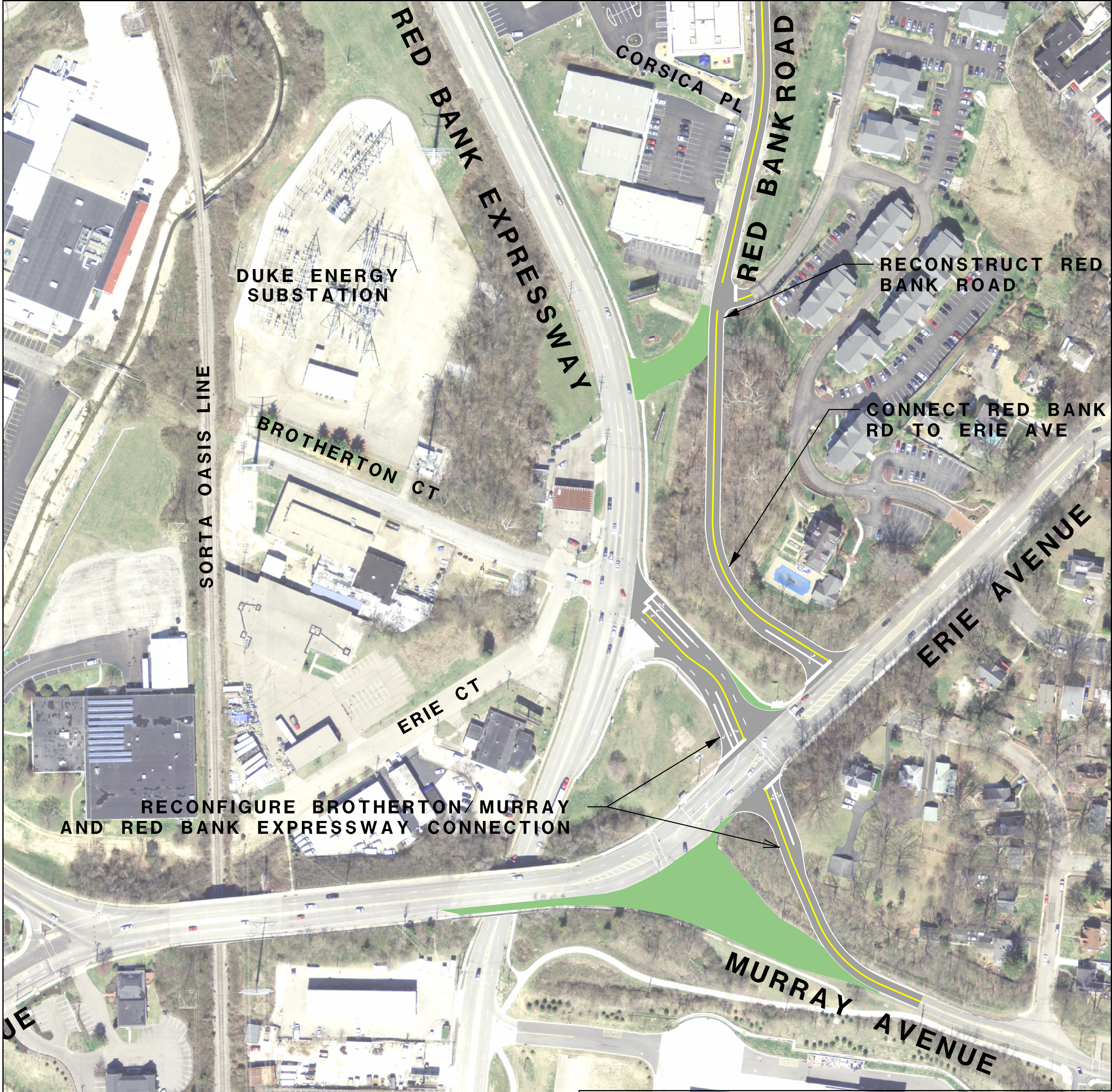


REALIGNMENT OF BROTHERTON CT/ERIE AVE/MURRAY RD
RED BANK EXPRESSWAY AND BROTHERTON/ERIE INTERSECTIONS
WITHOUT RELOCATED SR-32 SEGMENT 2-3



REALIGNMENT OF BROTHERTON CT/ERIE AVE/MURRAY RD
RED BANK EXPRESSWAY AND BROTHERTON/ERIE INTERSECTIONS
WITH RELOCATED SR-32 SEGMENT 2-3



LEGEND:

- POTENTIAL LOW BUILD ROADWAY IMPROVEMENTS
- BRIDGE

0 125 250
62.5

N

**HAM-32F-0.00
(RED BANK CORRIDOR)
PID 86461**

**CONCEPTUAL
"LOW BUILD" ALTERNATIVES
SEPTEMBER 2013**