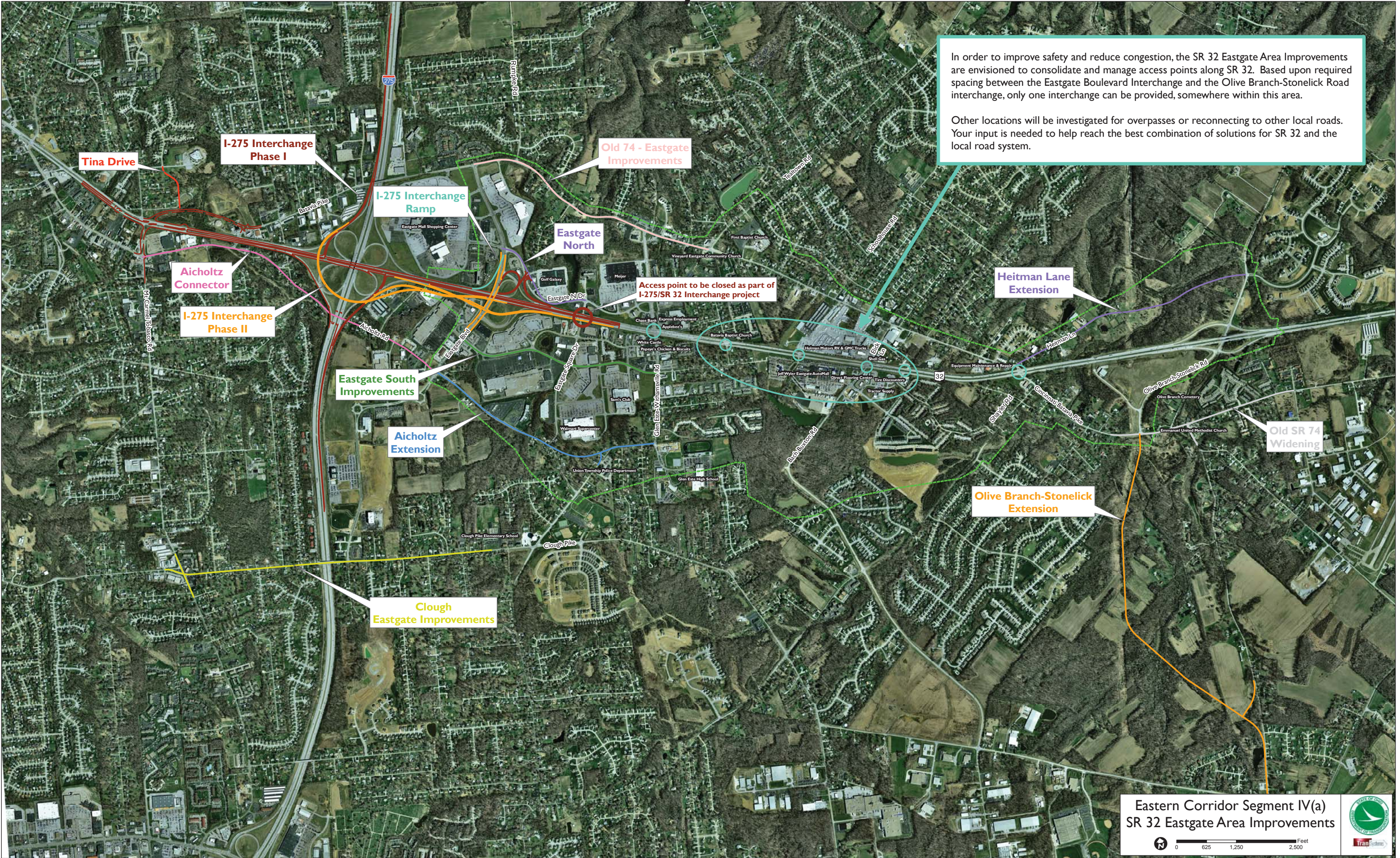


Study Area



In order to improve safety and reduce congestion, the SR 32 Eastgate Area Improvements are envisioned to consolidate and manage access points along SR 32. Based upon required spacing between the Eastgate Boulevard Interchange and the Olive Branch-Stonelick Road interchange, only one interchange can be provided, somewhere within this area.

Other locations will be investigated for overpasses or reconnecting to other local roads. Your input is needed to help reach the best combination of solutions for SR 32 and the local road system.