



0

50

100

FEET

200

May 2018

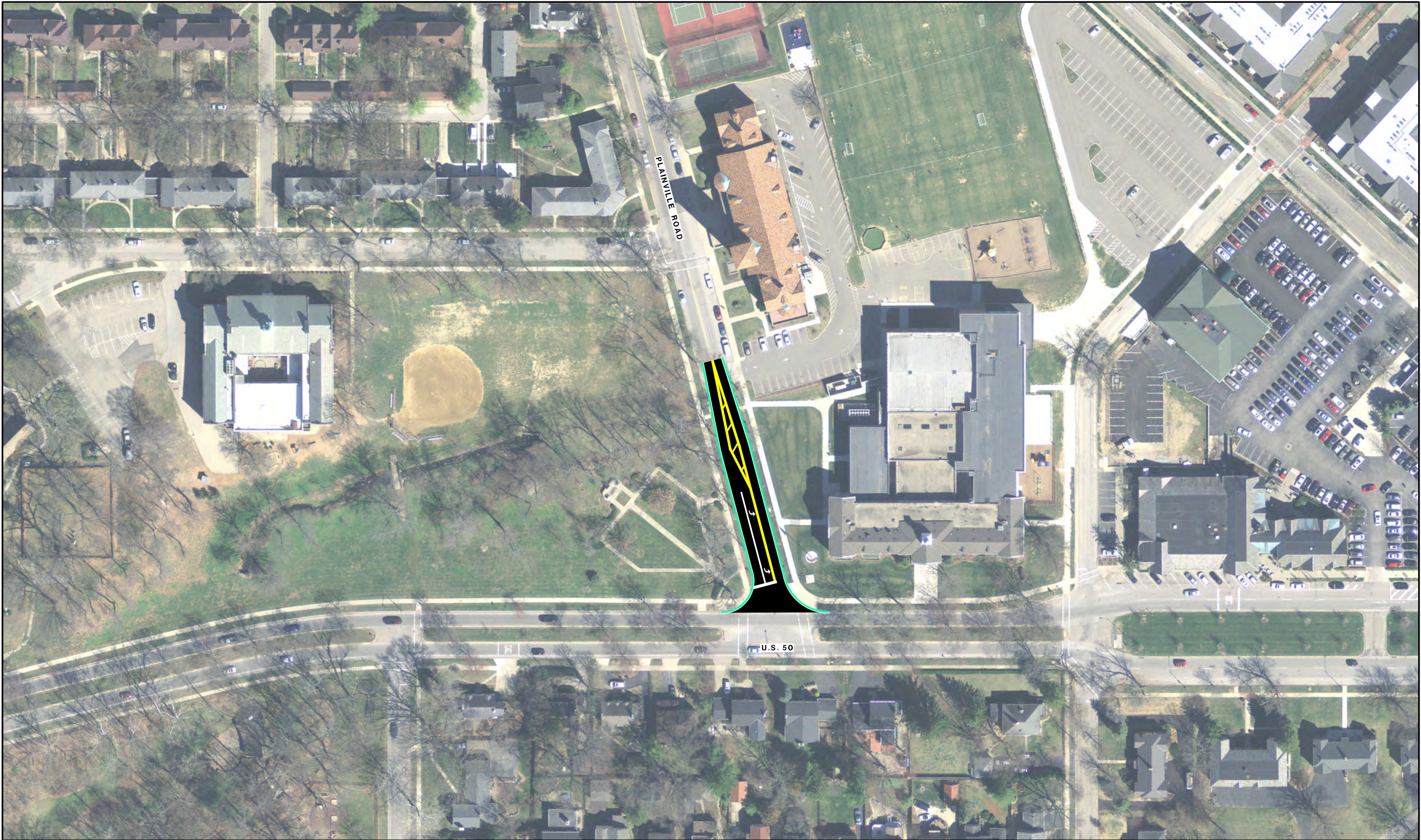
N

 **Stantec**

Safety	Traffic Operations	Constructability Issues	Construction Cost	R/W Impacts	Environmental / Community Impacts	Support and/or Facilitate Multi-Modal	Improve Regional Connectivity	Improve Local Access

Figure I-15A

RIGHT TURN LANE EXTENSION ON SOUTHBOUND WATERSON BY USING PEAK-HOUR PARKING RESTRICTION.

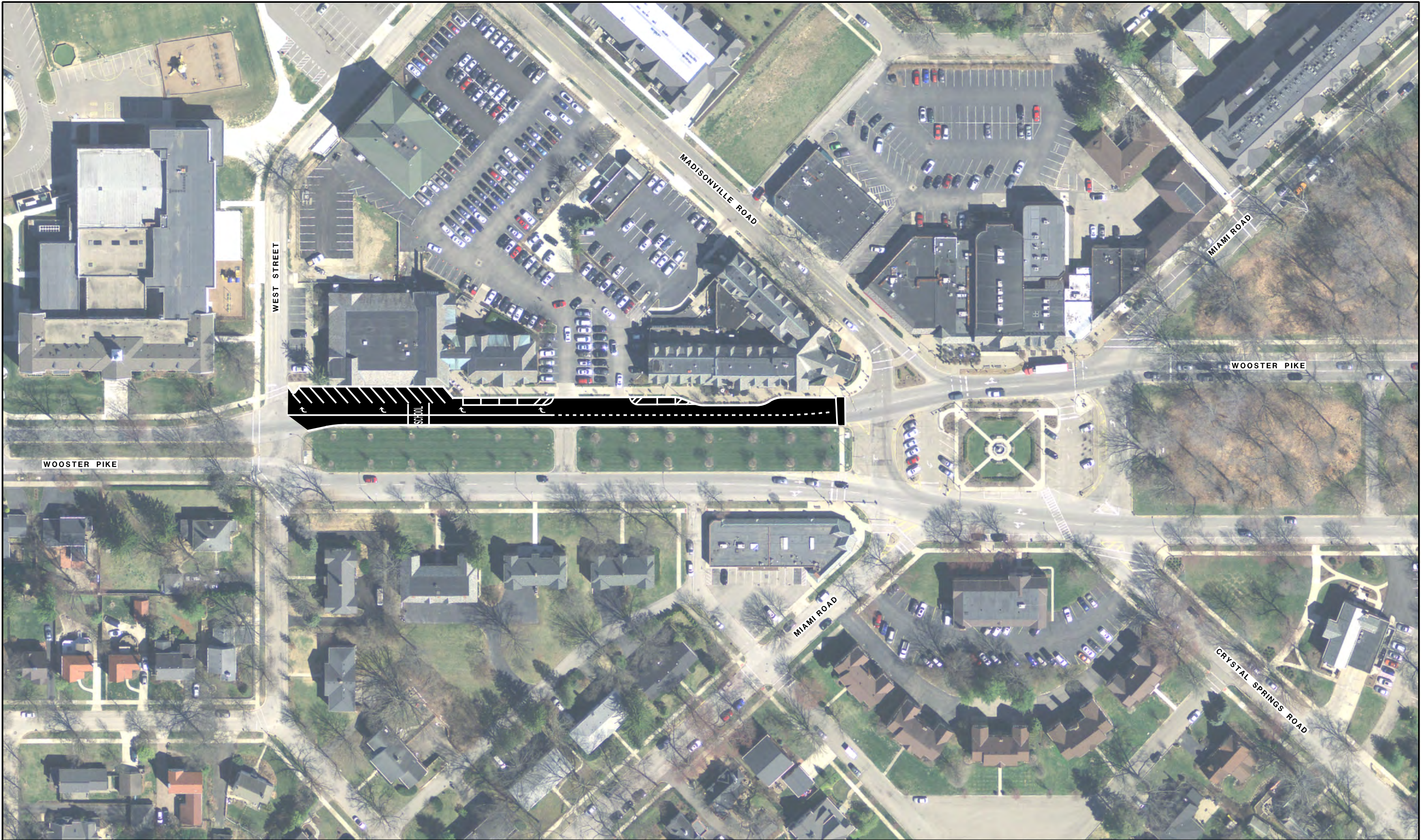


May 2018

Safety	Traffic Operations	Constructability Issues	Construction Cost	R/W Impacts	Environmental / Community Impacts	Support and/or Facilitate Multi-Modal	Improve Regional Connectivity	Improve Local Access

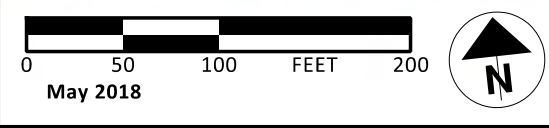
Figure I-14C

SB LEFT TURN LANE AT PLAINVILLE AND U.S. 50 INTERSECTION



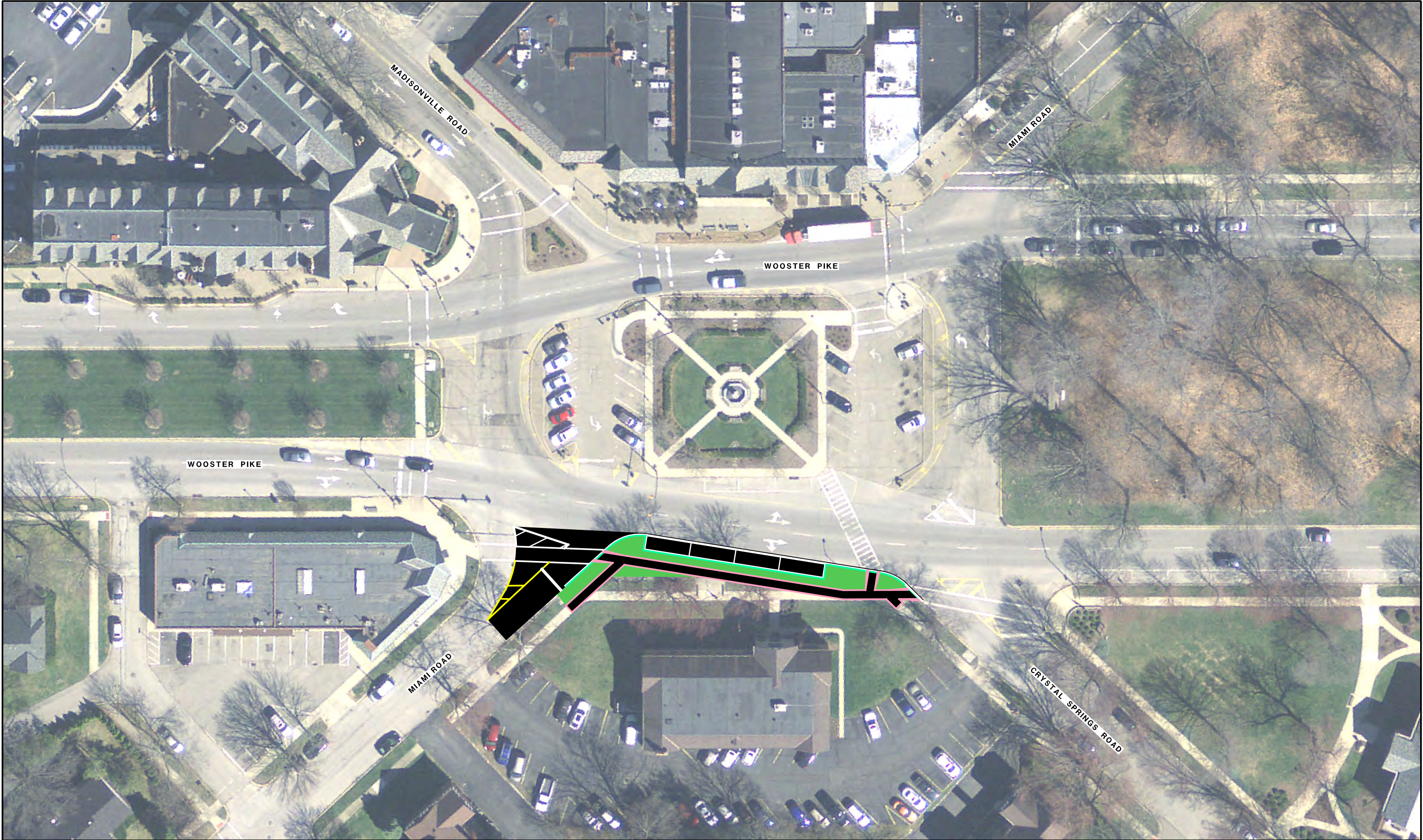
Safety	Traffic Operations	Constructability Issues	Construction Cost	R/W Impacts	Environmental / Community Impacts	Support and/or Facilitate Multi-Modal	Improve Regional Connectivity	Improve Local Access

Figure 50-4
RESTRIPIING WB BETWEEN WEST STREET
AND MARIEMONT SQUARE
DELINEATE AND EXTEND DROP LANE



Safety	Traffic Operations	Constructability Issues	Construction Cost	R/W Impacts	Environmental / Community Impacts	Support and/or Facilitate Multi-Modal	Improve Regional Connectivity	Improve Local Access

Figure I-13C
PROVIDE MERGING LANE FOR UNSIGNALIZED NORTHBOUND MIAMI ROAD TRAFFIC



0

25

50

FEET

100

May 2018

N

Stantec

Safety	Traffic Operations	Constructability Issues	Construction Cost	R/W Impacts	Environmental / Community Impacts	Support and/or Facilitate Multi-Modal	Improve Regional Connectivity	Improve Local Access

Figure I-13D

BETTER SIGHT DISTANCE AND CURB BUMP OUT TO SHORTEN CROSS WALKS

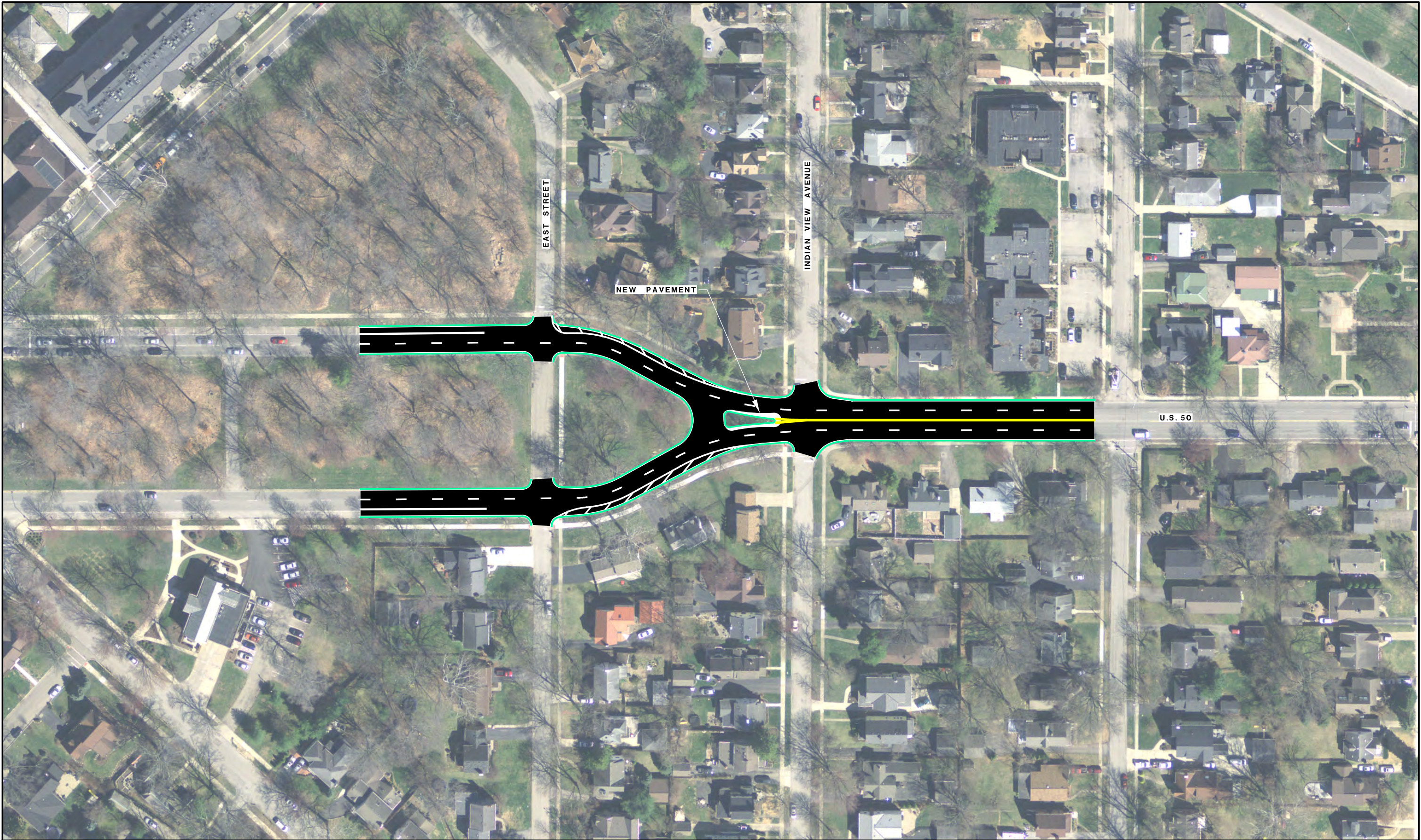


May 2018

Safety	Traffic Operations	Constructability Issues	Construction Cost	R/W Impacts	Environmental / Community Impacts	Support and/or Facilitate Multi-Modal	Improve Regional Connectivity	Improve Local Access

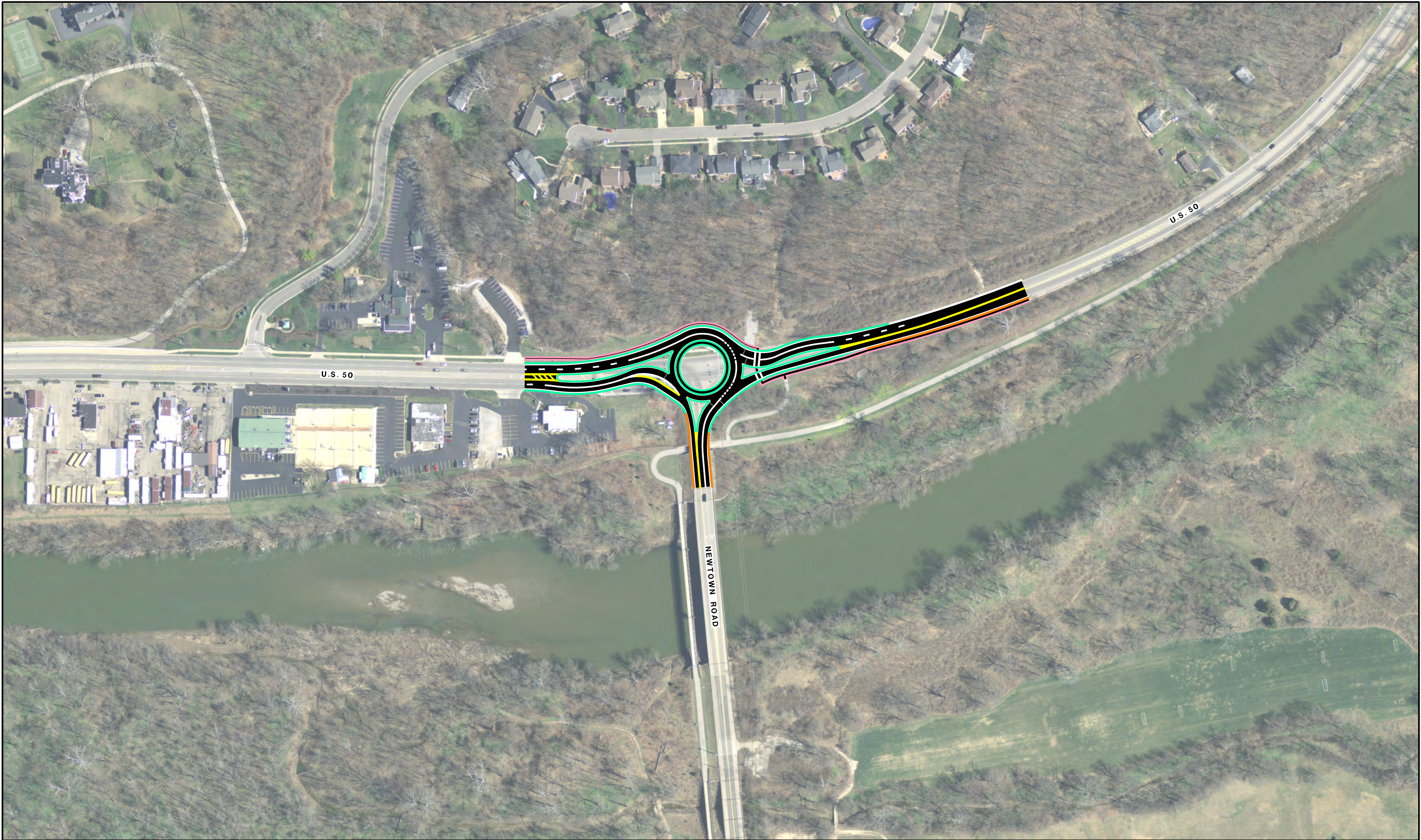
Figure I-13E

ADD CURB BUMP OUT TO SHORTEN CROSSWALK AND IMPROVE SIGHT DISTANCE AT CRYSTAL SPRINGS ROAD



Safety	Traffic Operations	Constructability Issues	Construction Cost	R/W Impacts	Environmental / Community Impacts	Support and/or Facilitate Multi-Modal	Improve Regional Connectivity	Improve Local Access

Figure 50-5
RESTRIPE PAVEMENT TO MAINTAIN TWO LANES
IN EACH DIRECTION ON WOOSTER PIKE



MARCH 2018

Safety	Traffic Operations	Constructability Issues	Construction Cost	R/W Impacts	Environmental / Community Impacts	Support and/or Facilitate Multi-Modal	Improve Regional Connectivity	Improve Local Access

Figure I-11C

ROUNDBABOUT AT NEWTOWN ROAD AND WOOSTER PIKE INTERSECTION