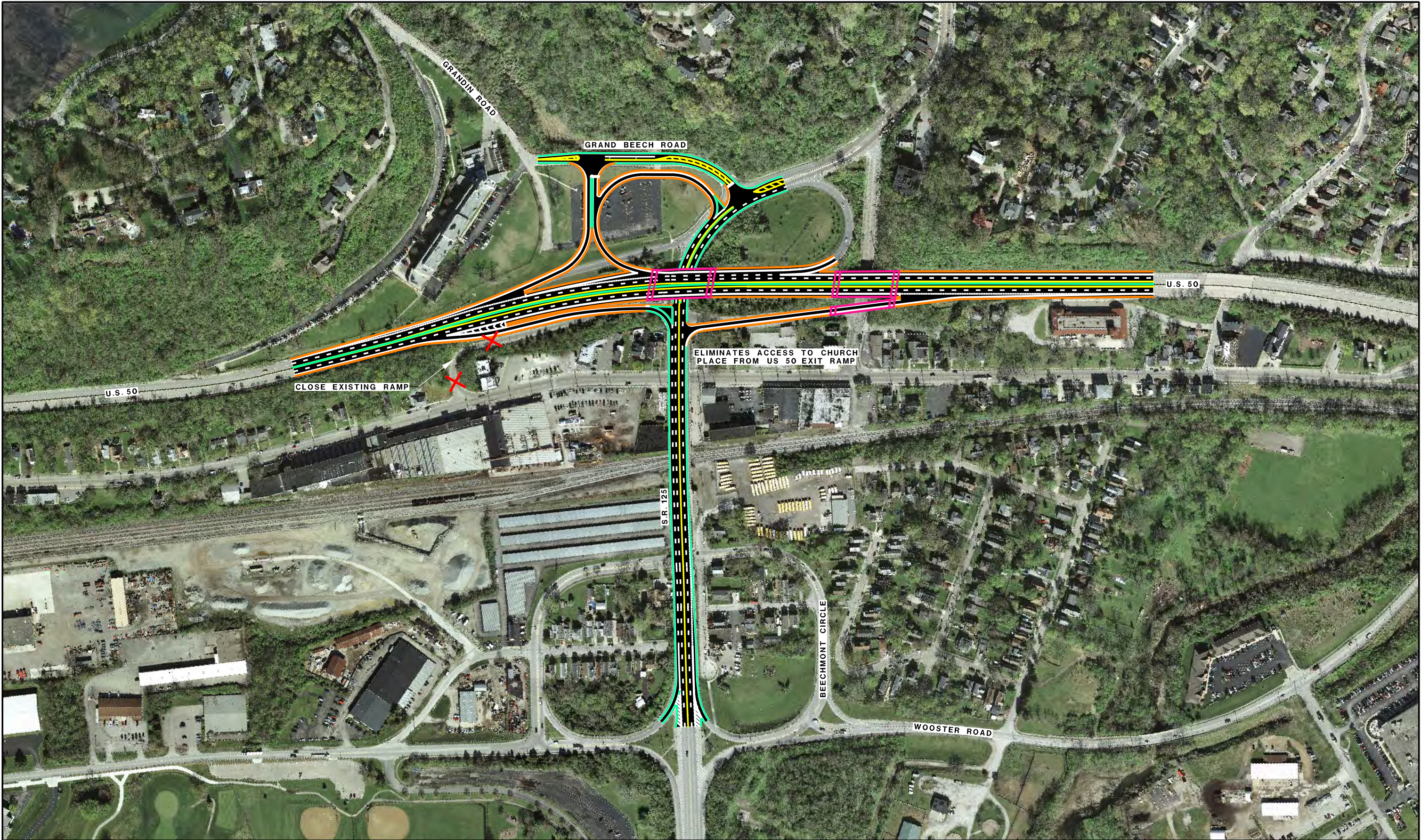


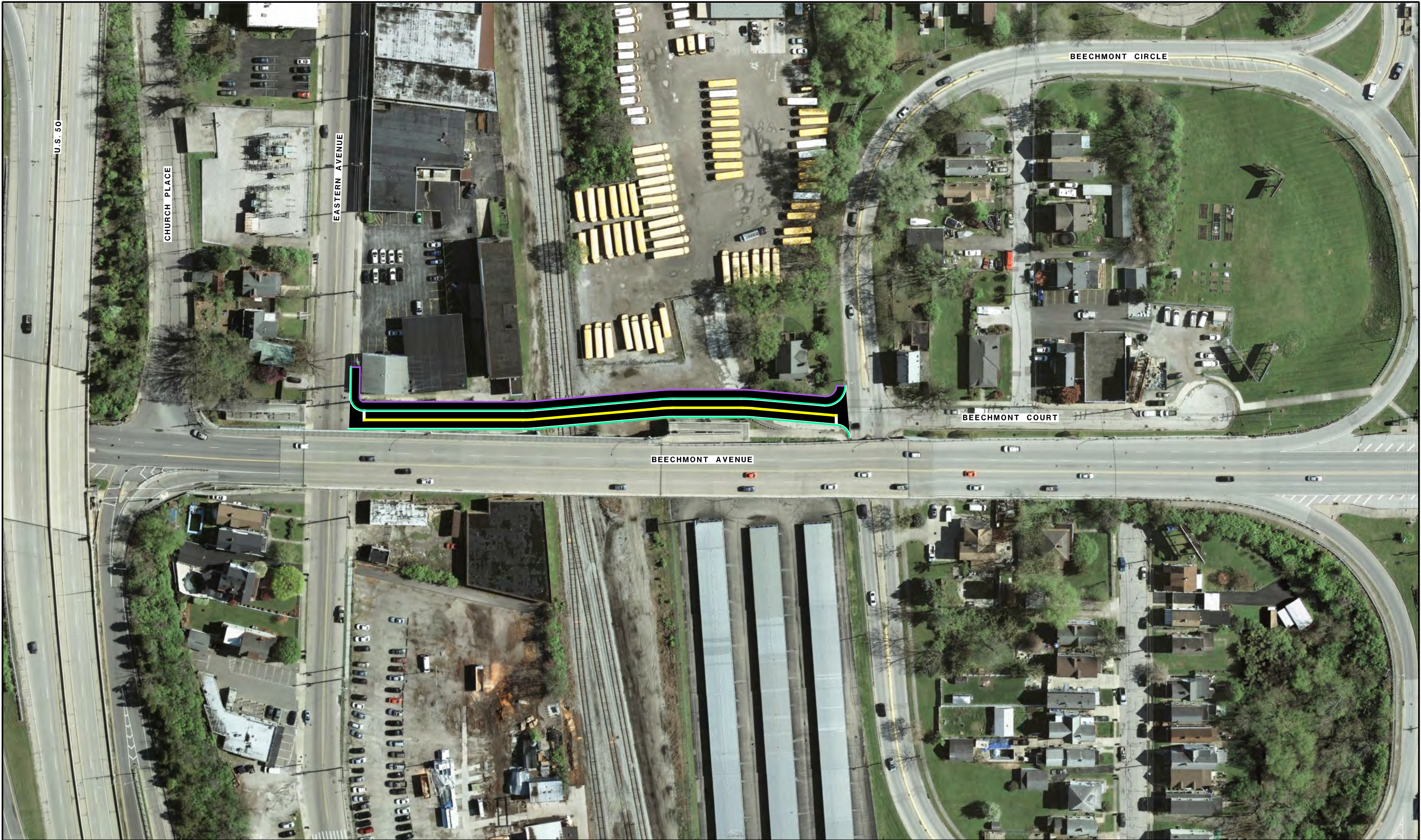
Safety	Traffic Operations	Constructability Issues	Construction Cost	R/W Impacts	Environmental / Community Impacts	Support and/or Facilitate Multi-Modal	Improve Regional Connectivity	Improve Local Access

Figure X-3A-1
ADDITIONAL RAMPS AT
S.R. 125 AND U.S. 50 INTERCHANGE



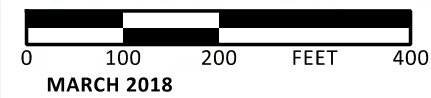
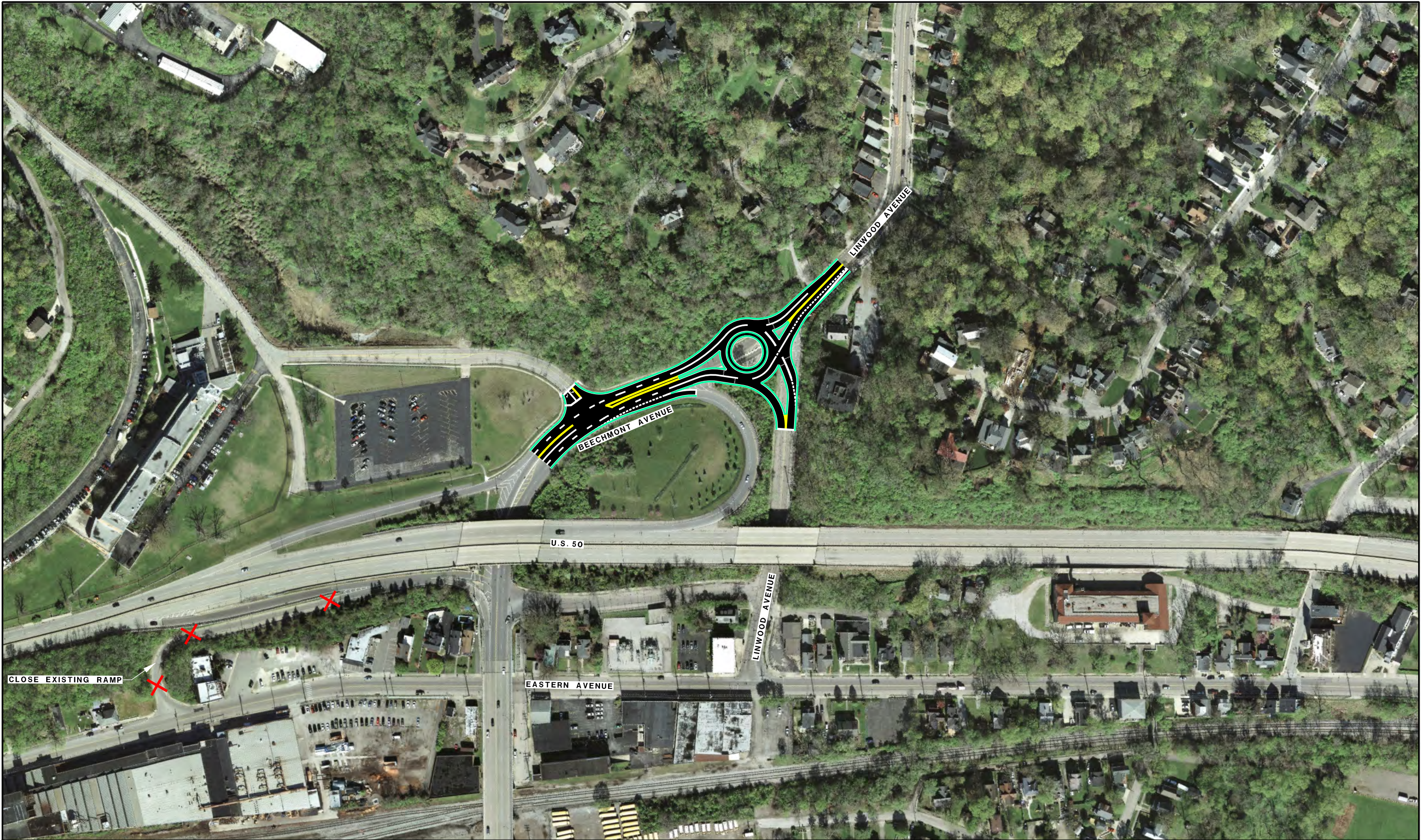
Safety	Traffic Operations	Constructability Issues	Construction Cost	R/W Impacts	Environmental / Community Impacts	Support and/or Facilitate Multi-Modal	Improve Regional Connectivity	Improve Local Access

Figure X-3A-2
ADDITIONAL RAMPS AT
S.R. 125 AND U.S. 50 INTERCHANGE



Safety	Traffic Operations	Constructability Issues	Construction Cost	R/W Impacts	Environmental / Community Impacts	Support and/or Facilitate Multi-Modal	Improve Regional Connectivity	Improve Local Access

Figure EW-1
RECONNECT BEECHMONT COURT



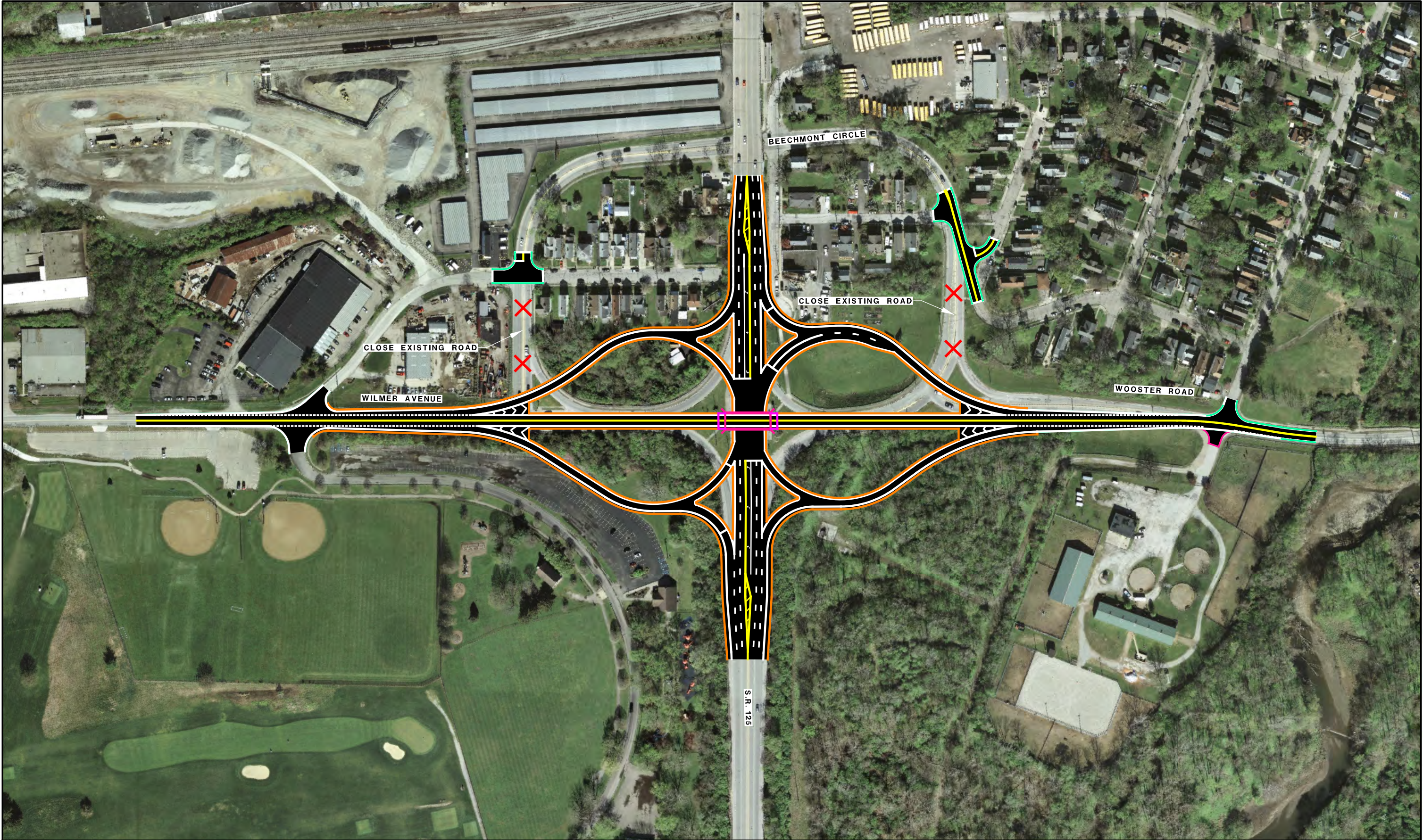
Safety	Traffic Operations	Constructability Issues	Construction Cost	R/W Impacts	Environmental / Community Impacts	Support and/or Facilitate Multi-Modal	Improve Regional Connectivity	Improve Local Access

Figure I-29A & X-3B
ROUNDBOUT AT BEECHMONT AVENUE AND LINWOOD AVENUE INTERSECTION



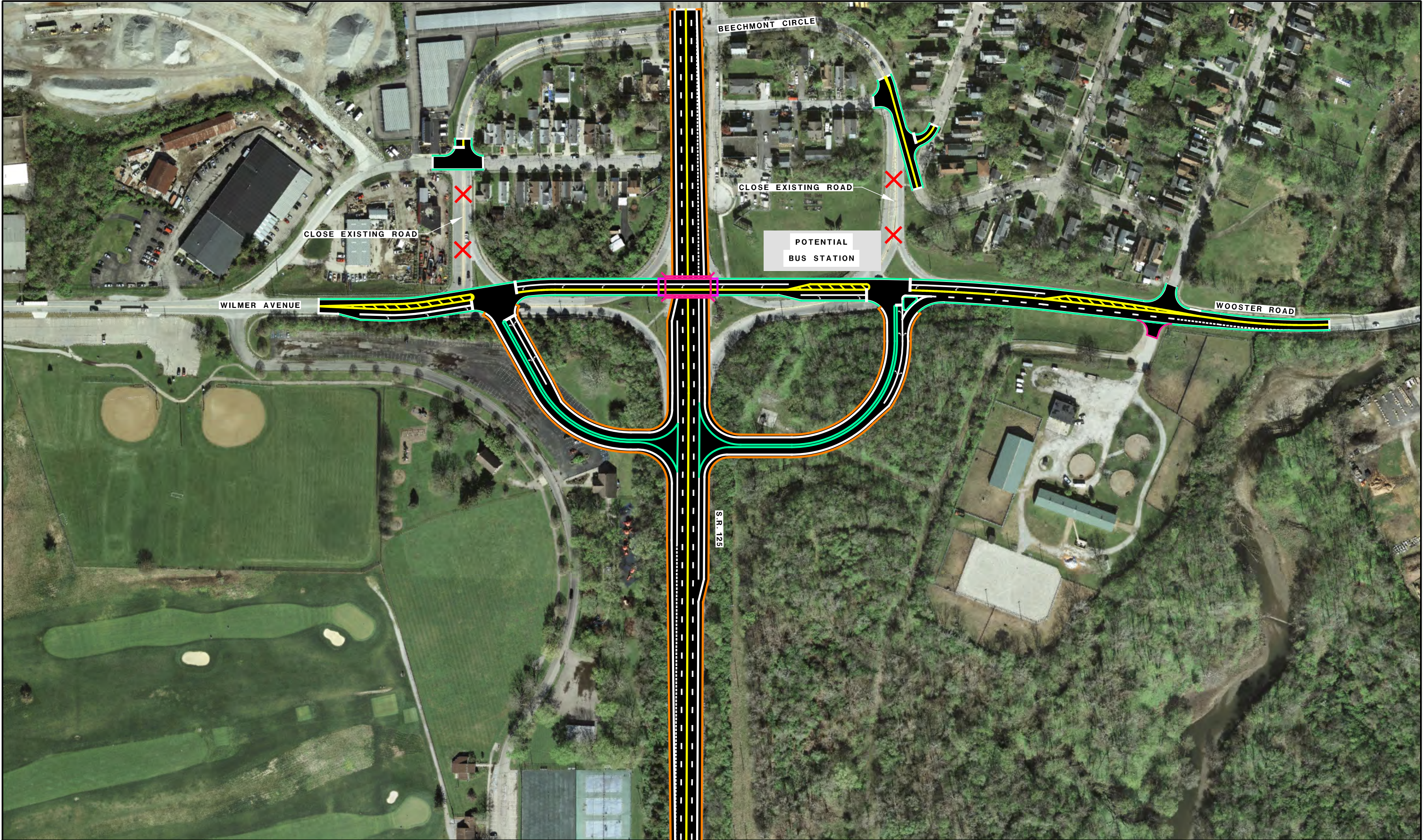
Safety	Traffic Operations	Constructability Issues	Construction Cost	R/W Impacts	Environmental / Community Impacts	Support and/or Facilitate Multi-Modal	Improve Regional Connectivity	Improve Local Access

Figure I-29B & X-3B
CLOSURE OF GEOMETRICALLY DEFICIENT RAMP FROM
EASTERN AVE TO S.R. 125 AND REPLACEMENT WITH
INTERSECTION AT LINWOOD AVENUE



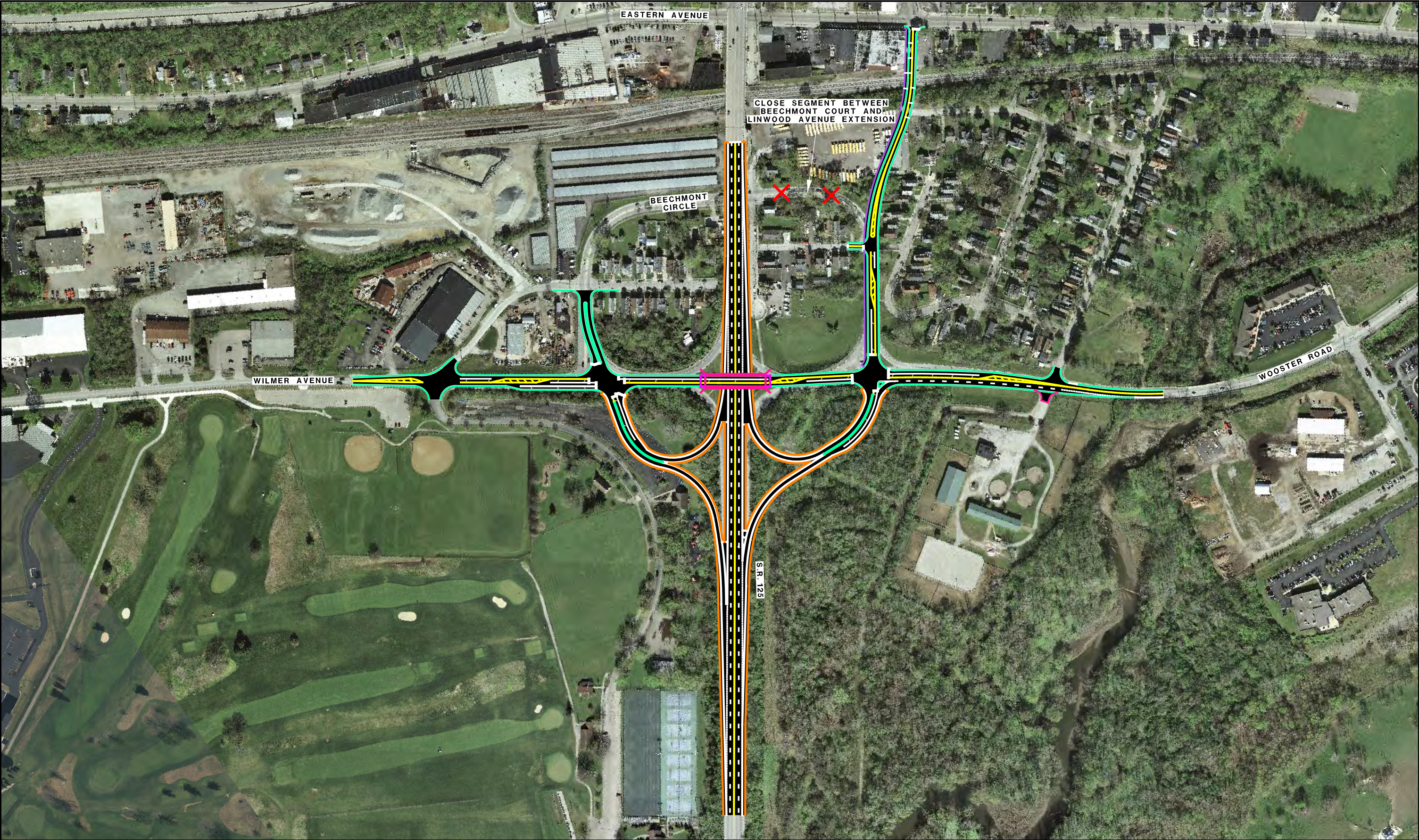
Safety	Traffic Operations	Constructability Issues	Construction Cost	R/W Impacts	Environmental / Community Impacts	Support and/or Facilitate Multi-Modal	Improve Regional Connectivity	Improve Local Access

Figure X-2B-1
SINGLE POINT URBAN INTERCHANGE



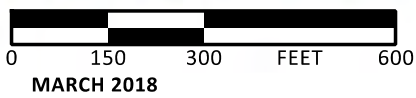
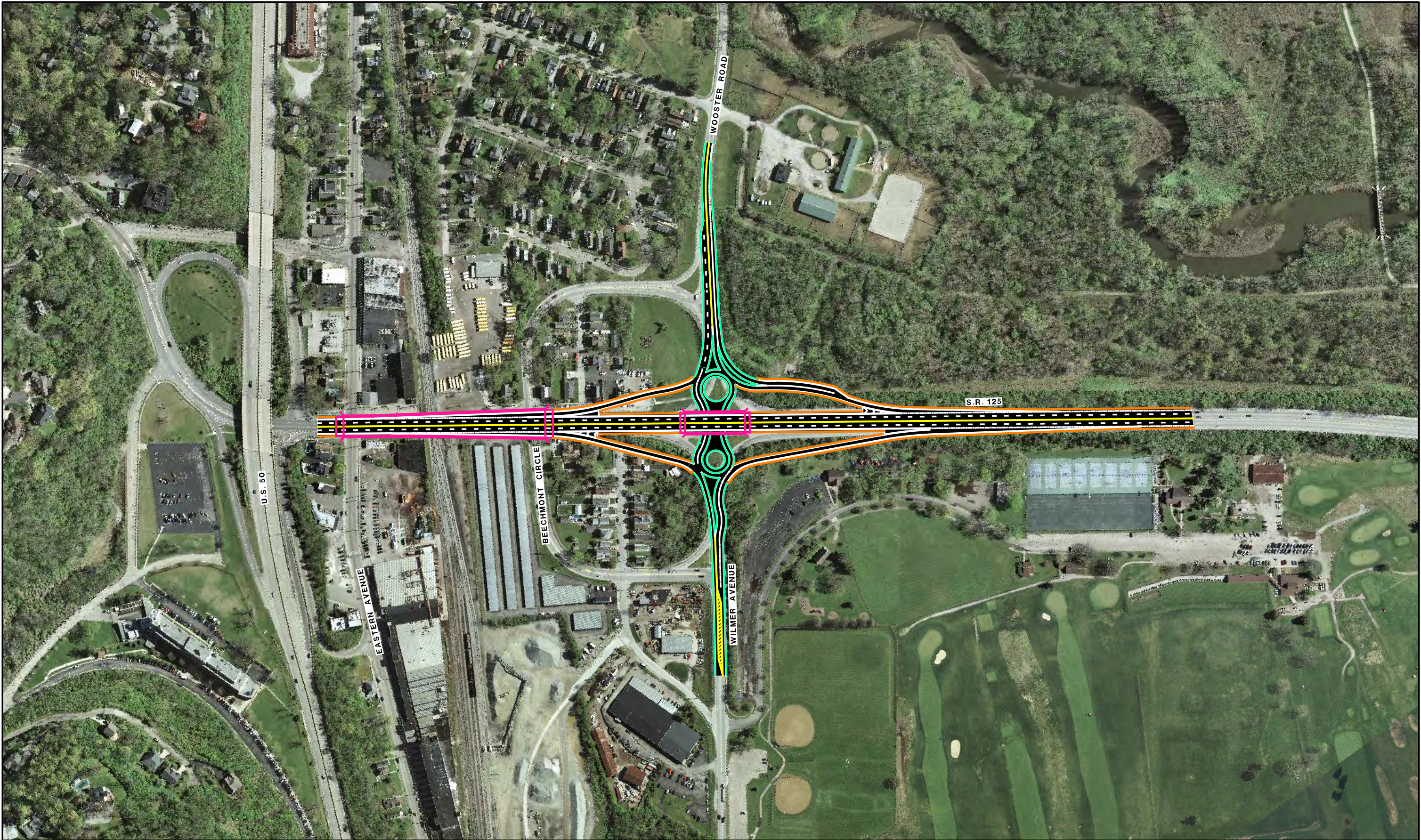
Safety	Traffic Operations	Constructability Issues	Construction Cost	R/W Impacts	Environmental / Community Impacts	Support and/or Facilitate Multi-Modal	Improve Regional Connectivity	Improve Local Access

Figure X-2B-2
GRADE SEPARATED INTERCHANGE TO CONNECT
WILMER AVENUE TO WOOSTER ROAD



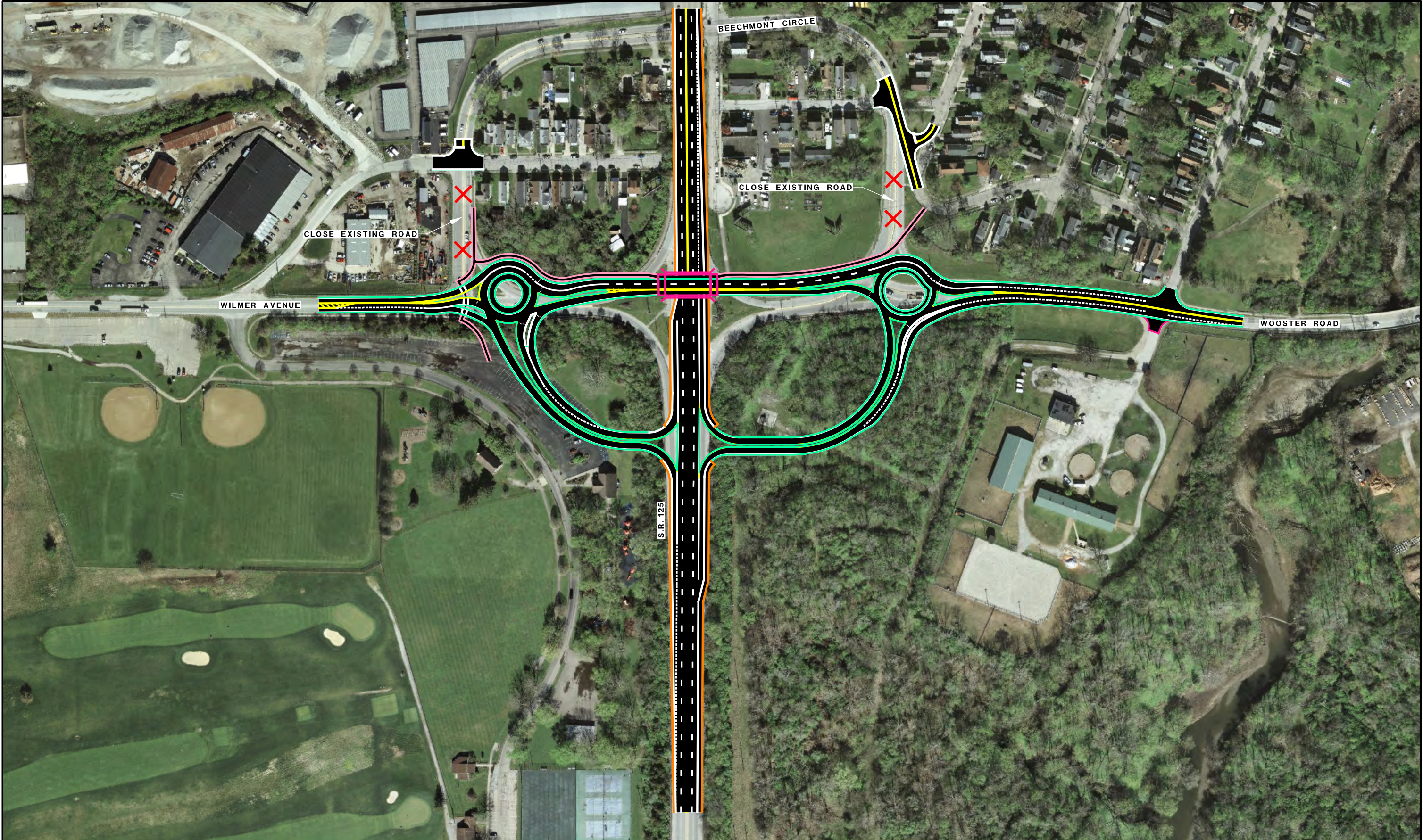
Safety	Traffic Operations	Constructability Issues	Construction Cost	R/W Impacts	Environmental / Community Impacts	Support and/or Facilitate Multi-Modal	Improve Regional Connectivity	Improve Local Access

Figure X-2B-3 and EW-2
GRADE SEPARATED INTERCHANGE TO CONNECT
WILMER AVENUE TO WOOSTER ROAD



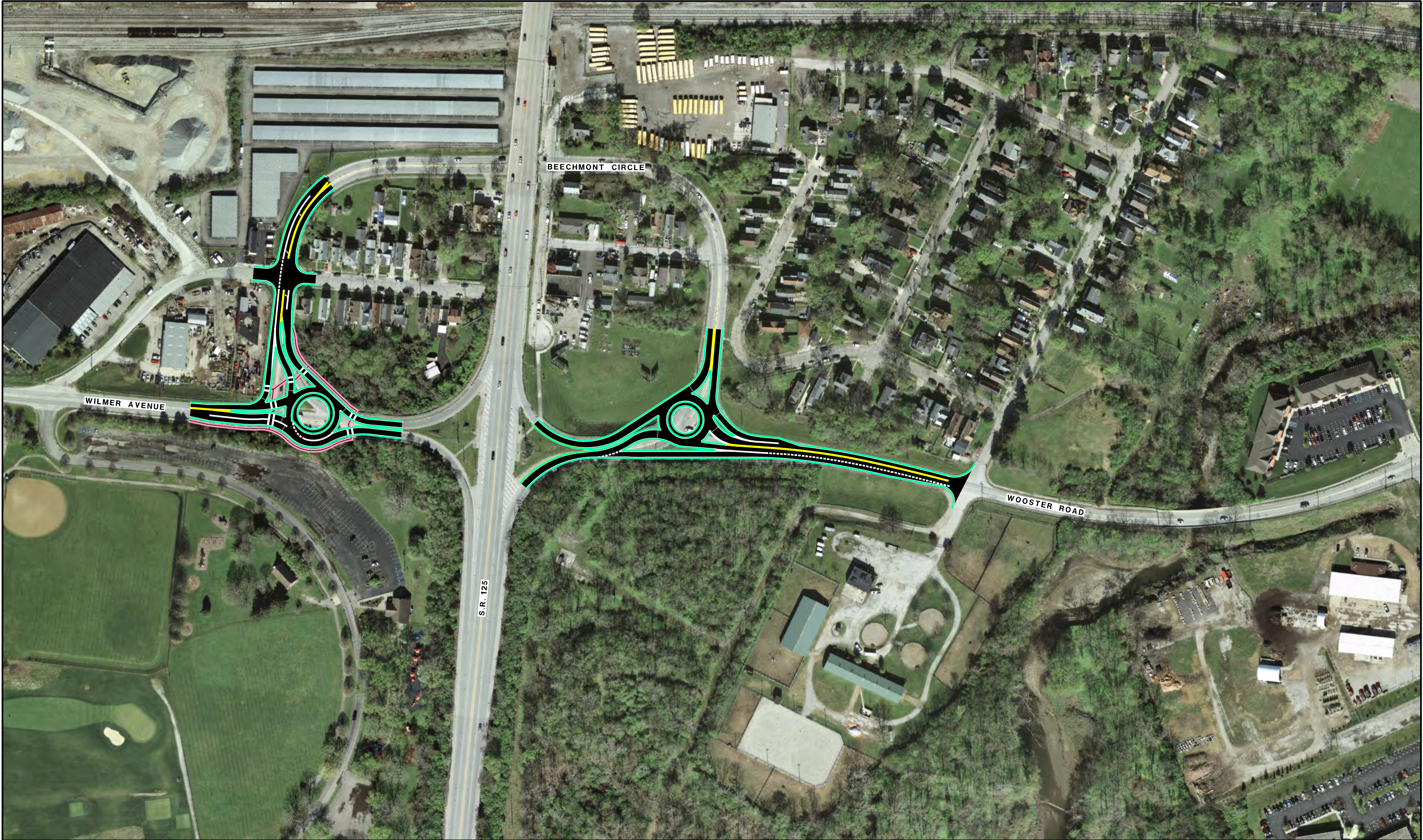
Safety	Traffic Operations	Constructability Issues	Construction Cost	R/W Impacts	Environmental / Community Impacts	Support and/or Facilitate Multi-Modal	Improve Regional Connectivity	Improve Local Access

Figure X-2B-4
GRADE SEPARATED INTERCHANGE TO CONNECT
WILMER AVENUE AND WOOSTER ROAD



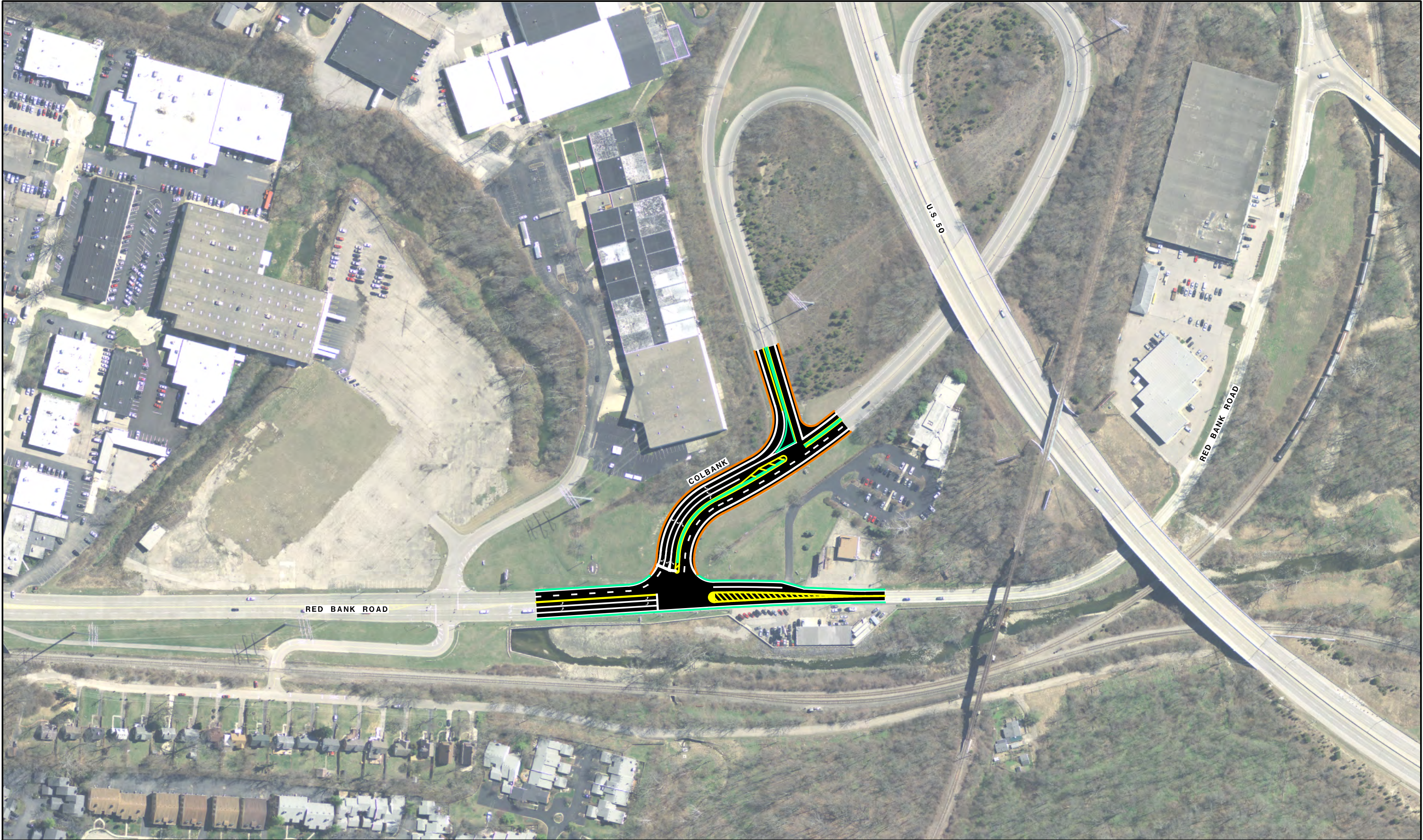
Safety	Traffic Operations	Constructability Issues	Construction Cost	R/W Impacts	Environmental / Community Impacts	Support and/or Facilitate Multi-Modal	Improve Regional Connectivity	Improve Local Access

Figure X-2B-5
GRADE SEPARATED INTERCHANGE TO CONNECT
WILMER AVENUE TO WOOSTER ROAD



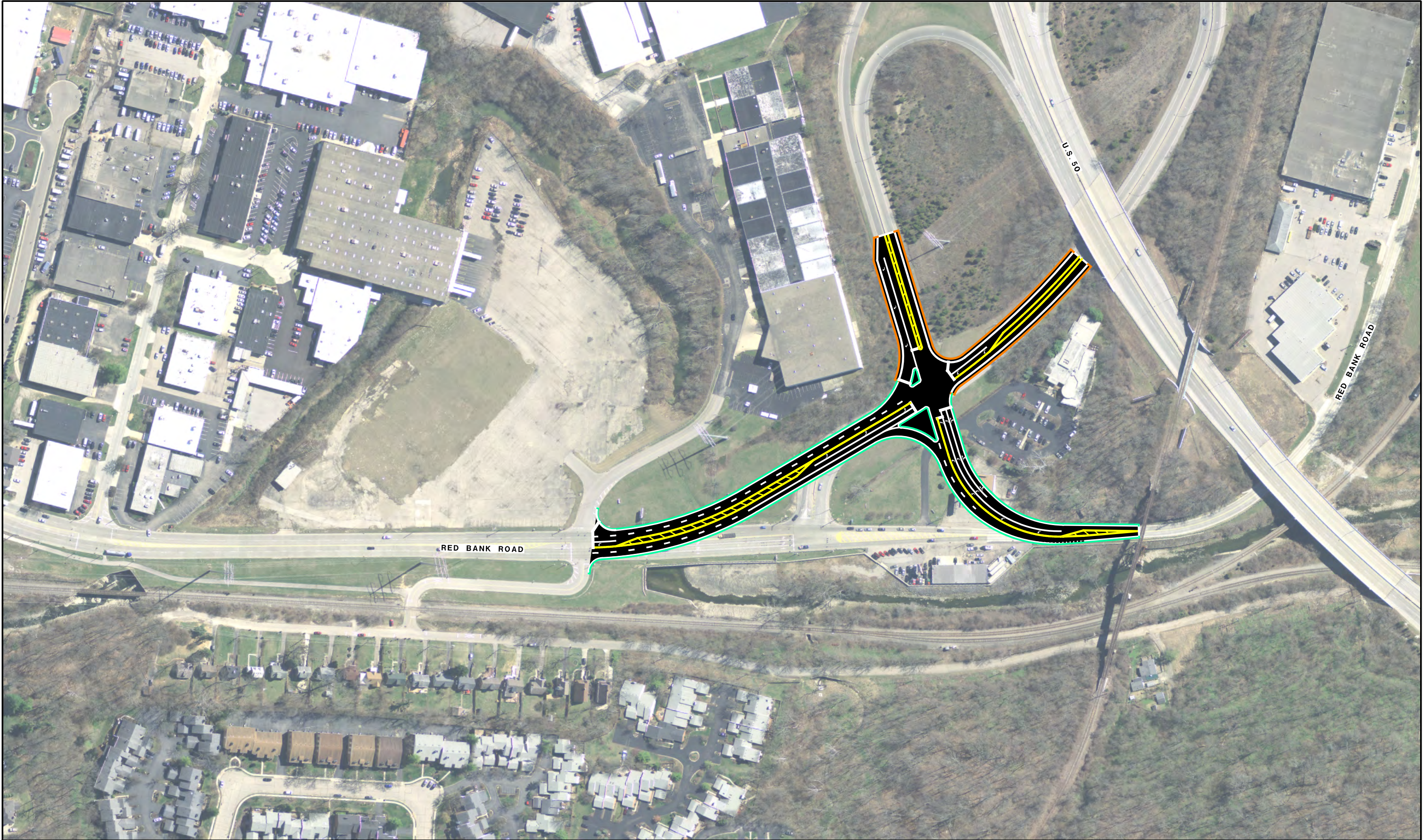
Safety	Traffic Operations	Constructability Issues	Construction Cost	R/W Impacts	Environmental / Community Impacts	Support and/or Facilitate Multi-Modal	Improve Regional Connectivity	Improve Local Access

Figure I-26A & I-27A
ROUNDBOUTS AT BEECHMONT CIRCLE INTERSECTIONS WITH WILMER AVENUE AND WOOSTER ROAD



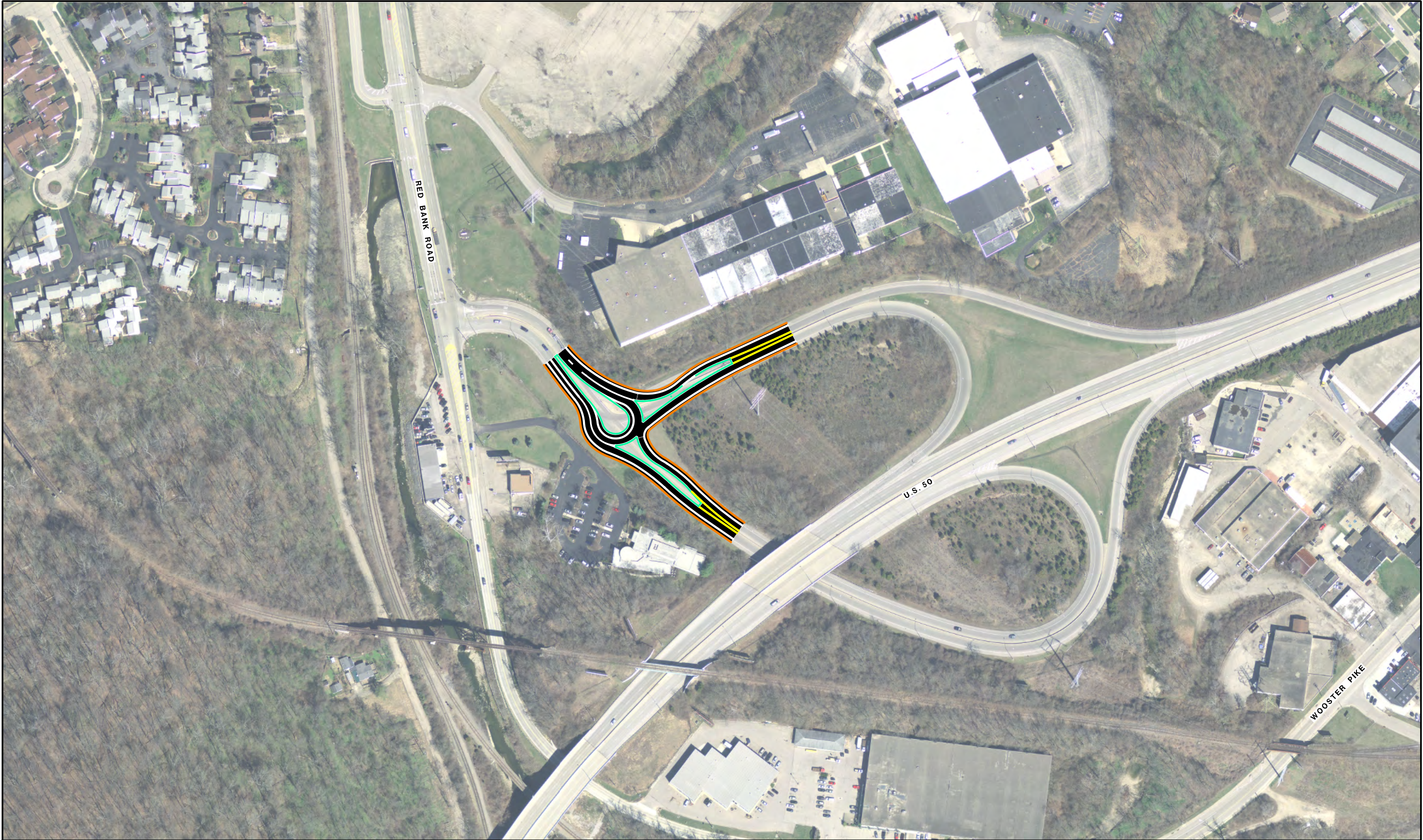
Safety	Traffic Operations	Constructability Issues	Construction Cost	R/W Impacts	Environmental / Community Impacts	Support and/or Facilitate Multi-Modal	Improve Regional Connectivity	Improve Local Access

Figure I-25B
DUAL WESTBOUND TURN LANES
AND DUAL NORTHBOUND THROUGH LANES



Safety	Traffic Operations	Constructability Issues	Construction Cost	R/W Impacts	Environmental / Community Impacts	Support and/or Facilitate Multi-Modal	Improve Regional Connectivity	Improve Local Access

Figure I-25C
RELOCATE RED BANK/COLBANK INTERSECTION



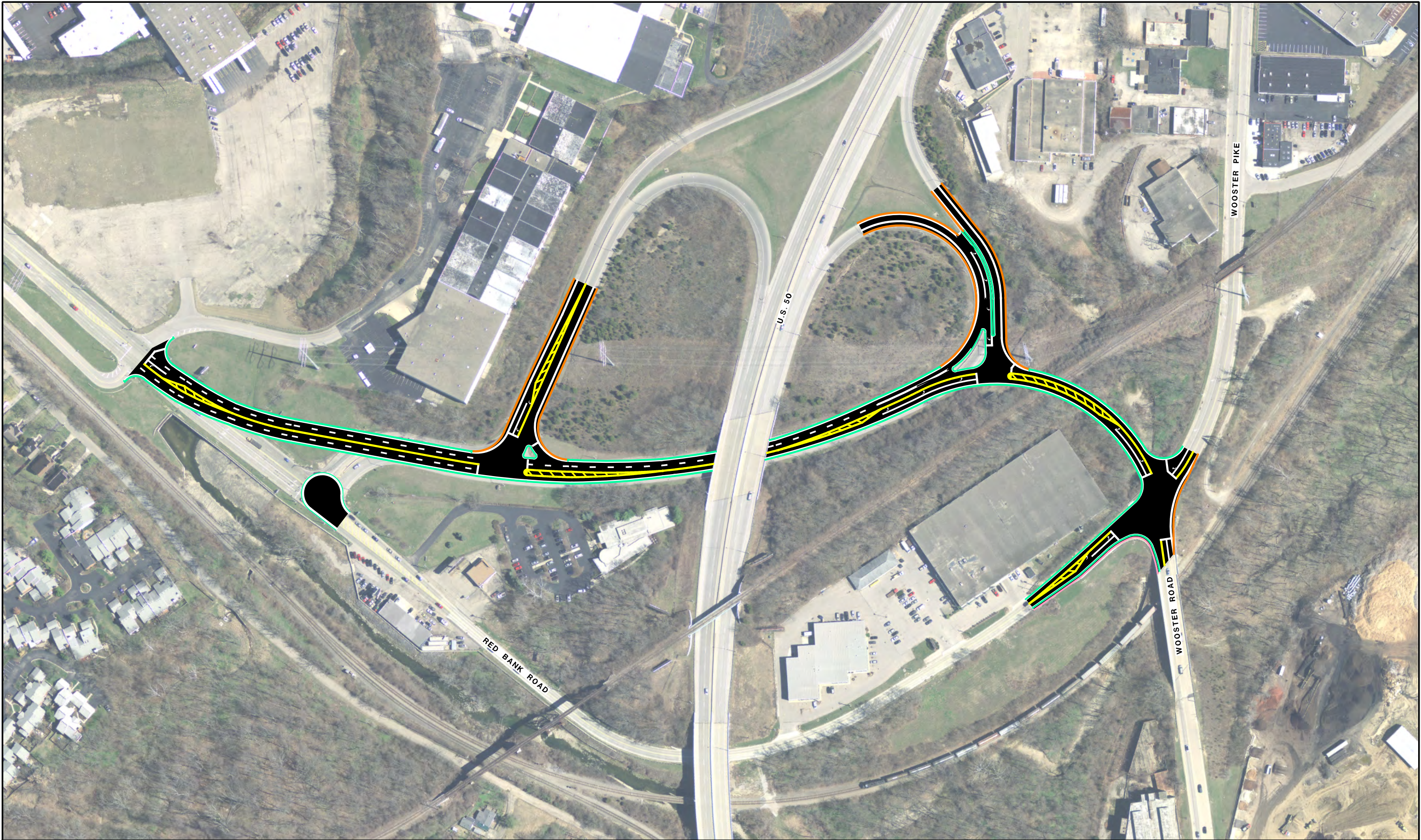
Safety	Traffic Operations	Constructability Issues	Construction Cost	R/W Impacts	Environmental / Community Impacts	Support and/or Facilitate Multi-Modal	Improve Regional Connectivity	Improve Local Access

Figure X-4C-1
ROUNDBOUT AT COLBANK AND U.S. 50
RAMP INTERSECTION



Safety	Traffic Operations	Constructability Issues	Construction Cost	R/W Impacts	Environmental / Community Impacts	Support and/or Facilitate Multi-Modal	Improve Regional Connectivity	Improve Local Access

Figure X-4C-2
ROUNDBOUT AT COLBANK AND U.S. 50
RAMP INTERSECTION



Stantec

Safety	Traffic Operations	Constructability Issues	Construction Cost	R/W Impacts	Environmental / Community Impacts	Support and/or Facilitate Multi-Modal	Improve Regional Connectivity	Improve Local Access

Figure X-4D
EXTEND WOOSTER TO TIE
DIRECTLY INTO RED BANK ROAD



MARCH 2018

Safety	Traffic Operations	Constructability Issues	Construction Cost	R/W Impacts	Environmental / Community Impacts	Support and/or Facilitate Multi-Modal	Improve Regional Connectivity	Improve Local Access

Figure I-16B

ROUNDBOUT AT MEADOWLARK LANE AND U.S. 50 INTERSECTION



MARCH 2018

Safety	Traffic Operations	Constructability Issues	Construction Cost	R/W Impacts	Environmental / Community Impacts	Support and/or Facilitate Multi-Modal	Improve Regional Connectivity	Improve Local Access

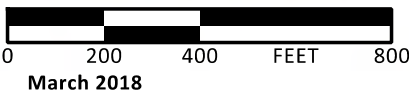
Figure I-20B

ROUNDBOUT AT WOOSTER PIKE AND RED BANK ROAD INTERSECTION



Safety	Traffic Operations	Constructability Issues	Construction Cost	R/W Impacts	Environmental / Community Impacts	Support and/or Facilitate Multi-Modal	Improve Regional Connectivity	Improve Local Access

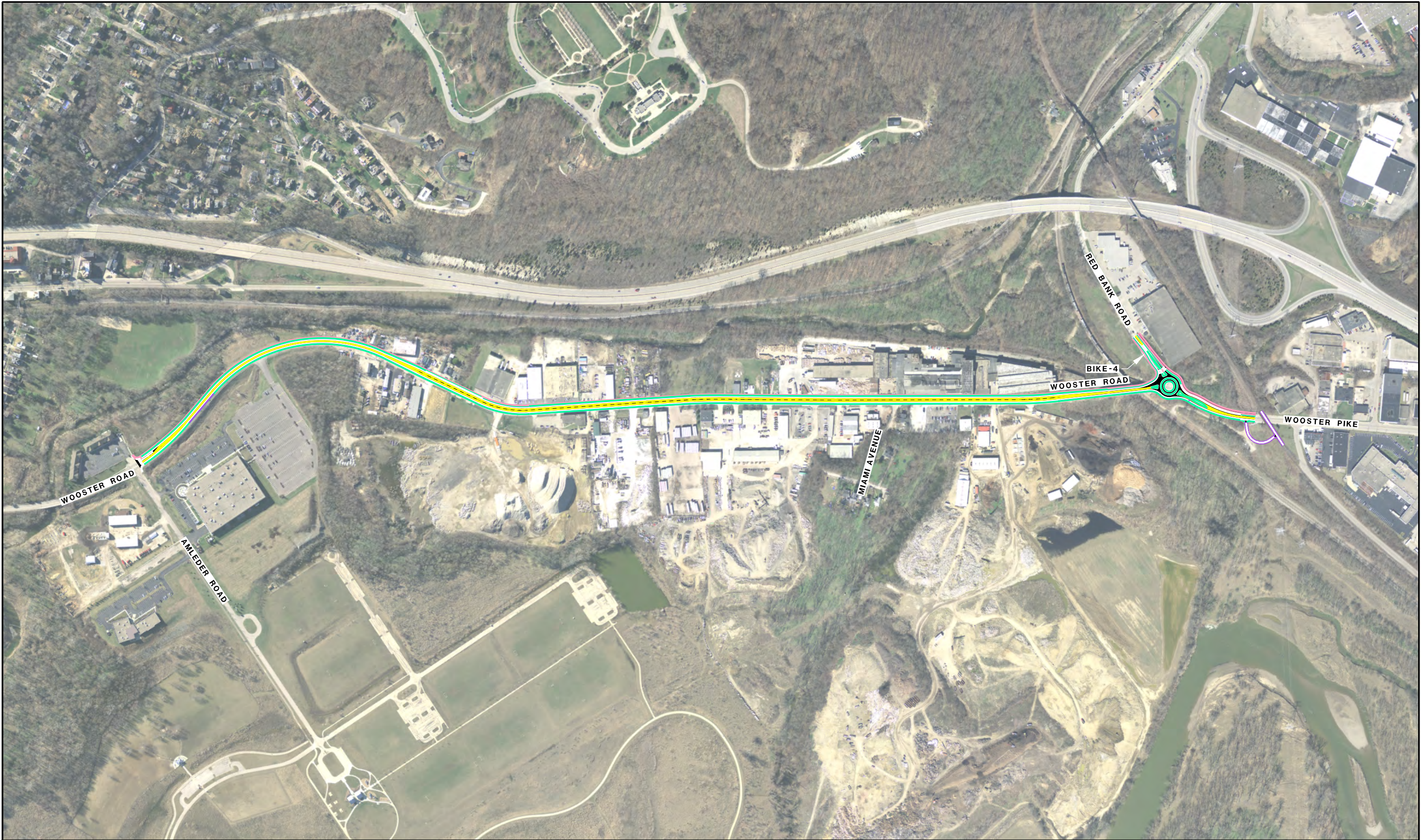
Figure BIKE-1
ACCESS ROAD FROM EASTERN AVENUE TO WOOSTER AT
US BANK AND PARK ENTRANCE



Stantec

Safety	Traffic Operations	Constructability Issues	Construction Cost	R/W Impacts	Environmental / Community Impacts	Support and/or Facilitate Multi-Modal	Improve Regional Connectivity	Improve Local Access

Figure BIKE-2A
SHARED USE PATH FROM WASSON TRAIL
TO ARMLEDER ROAD



0

250

500

FEET

1000

MARCH 2018

Safety	Traffic Operations	Constructability Issues	Construction Cost	R/W Impacts	Environmental / Community Impacts	Support and/or Facilitate Multi-Modal	Improve Regional Connectivity	Improve Local Access

Figure BIKE-3

WOOSTER ROAD TO INCLUDE BIKE LANES

