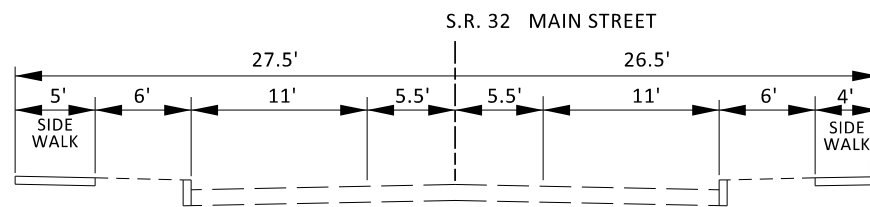


PROPOSED TYPICAL SECTION A-A

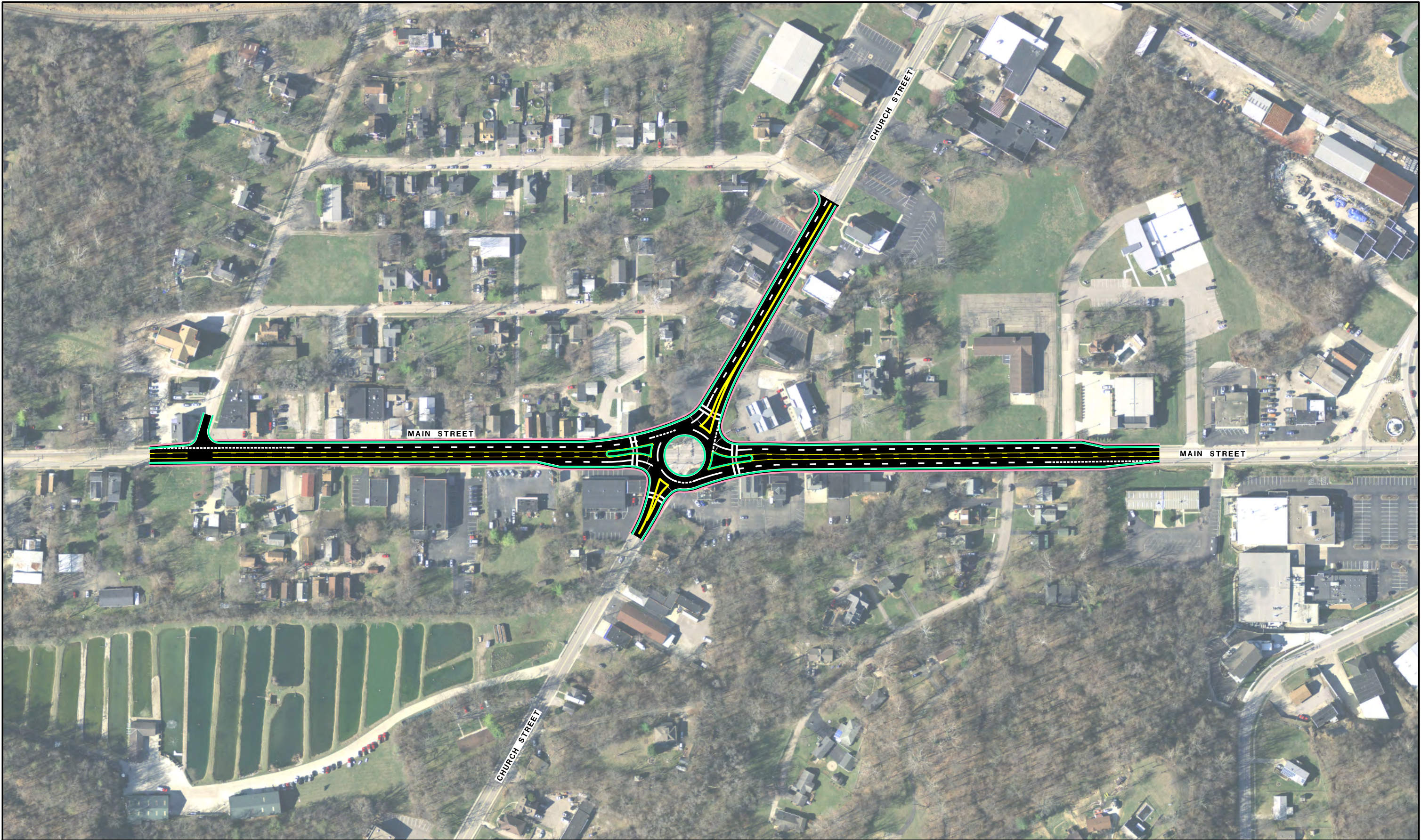


EXISTING TYPICAL SECTION A-A



Safety	Traffic Operations	Constructability Issues	Construction Cost	R/W Impacts	Environmental / Community Impacts	Support and/or Facilitate Multi-Modal	Improve Regional Connectivity	Improve Local Access

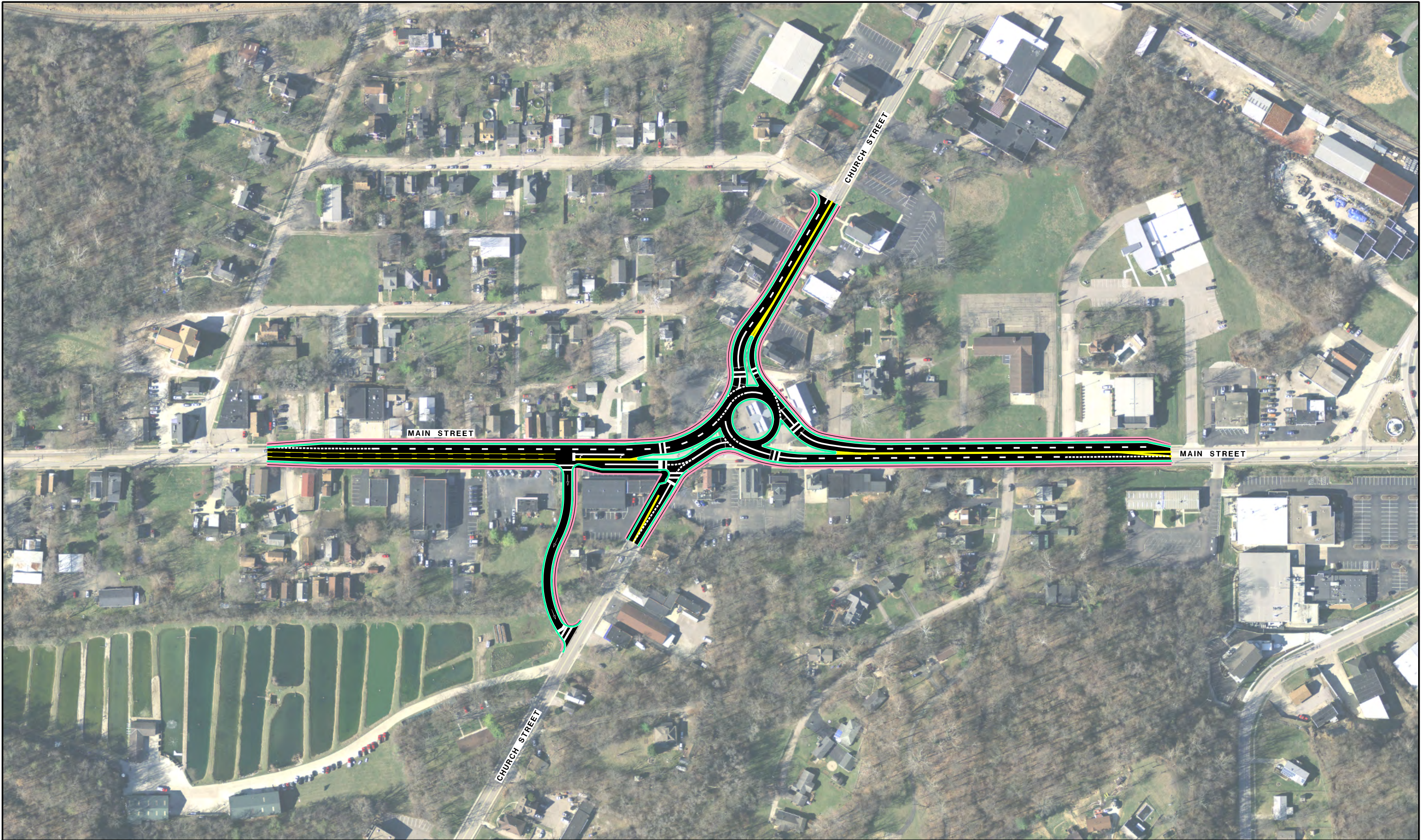
Figure I-5A and I-6A
EXTEND STORAGE LENGTH AT THE INTERSECTION OF CHURCH STREET AND MAIN STREET



Stantec

Safety	Traffic Operations	Constructability Issues	Construction Cost	R/W Impacts	Environmental / Community Impacts	Support and/or Facilitate Multi-Modal	Improve Regional Connectivity	Improve Local Access

Figure I-6B-1
ROUNDBOUT AT CHURCH STREET
AND MAIN STREET INTERSECTION



Safety	Traffic Operations	Constructability Issues	Construction Cost	R/W Impacts	Environmental / Community Impacts	Support and/or Facilitate Multi-Modal	Improve Regional Connectivity	Improve Local Access

Figure I-6B-2
ROUNDBOUT AT CHURCH STREET
AND MAIN STREET INTERSECTION



Safety	Traffic Operations	Constructability Issues	Construction Cost	R/W Impacts	Environmental / Community Impacts	Support and/or Facilitate Multi-Modal	Improve Regional Connectivity	Improve Local Access

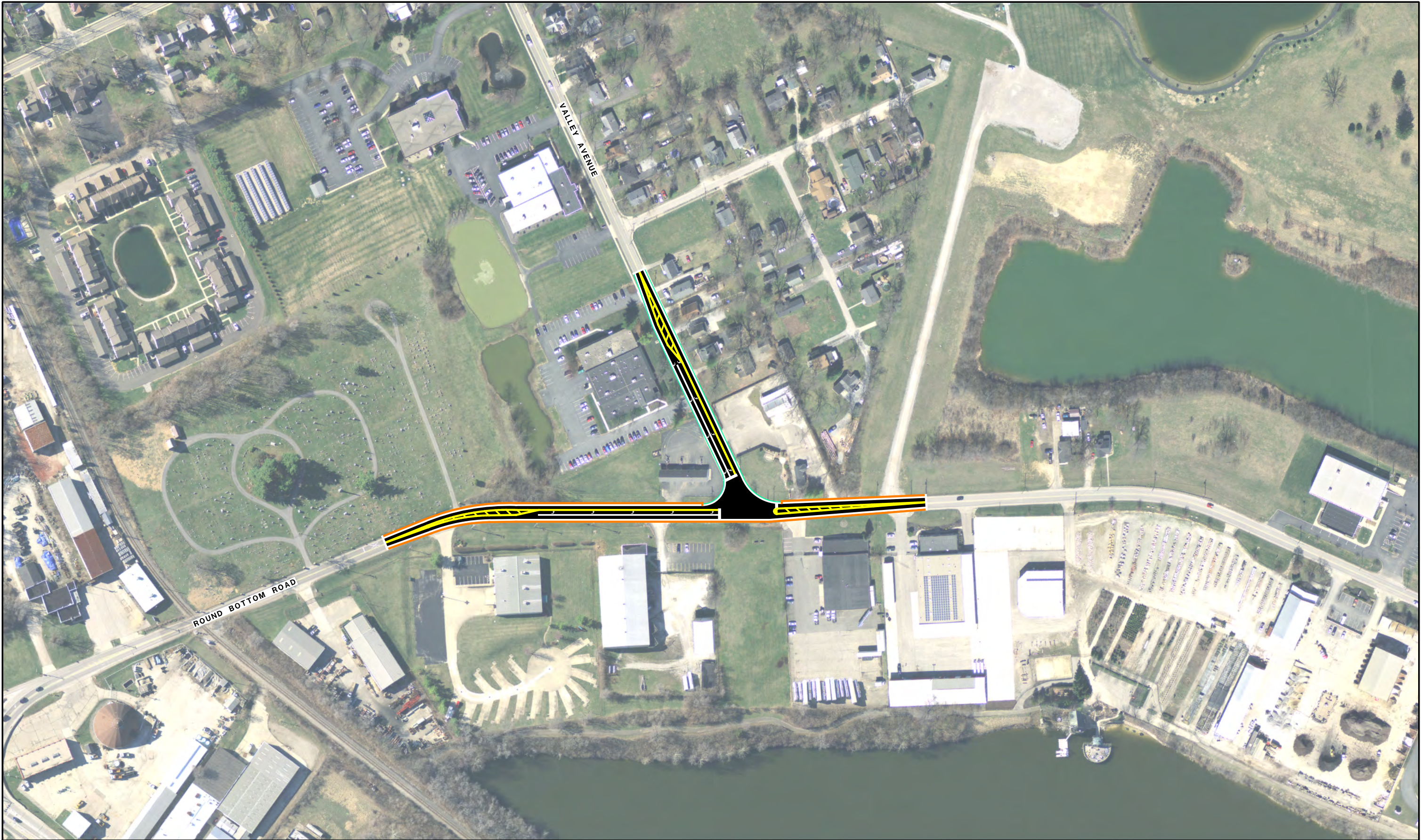
Figure I-5B-1
ROUNDBOUT AT ROUND BOTTOM ROAD
AND MAIN STREET INTERSECTION



Stantec

Safety	Traffic Operations	Constructability Issues	Construction Cost	R/W Impacts	Environmental / Community Impacts	Support and/or Facilitate Multi-Modal	Improve Regional Connectivity	Improve Local Access

Figure I-5B-2
ROUNDBOUT AT ROUND BOTTOM ROAD
AND MAIN STREET INTERSECTION

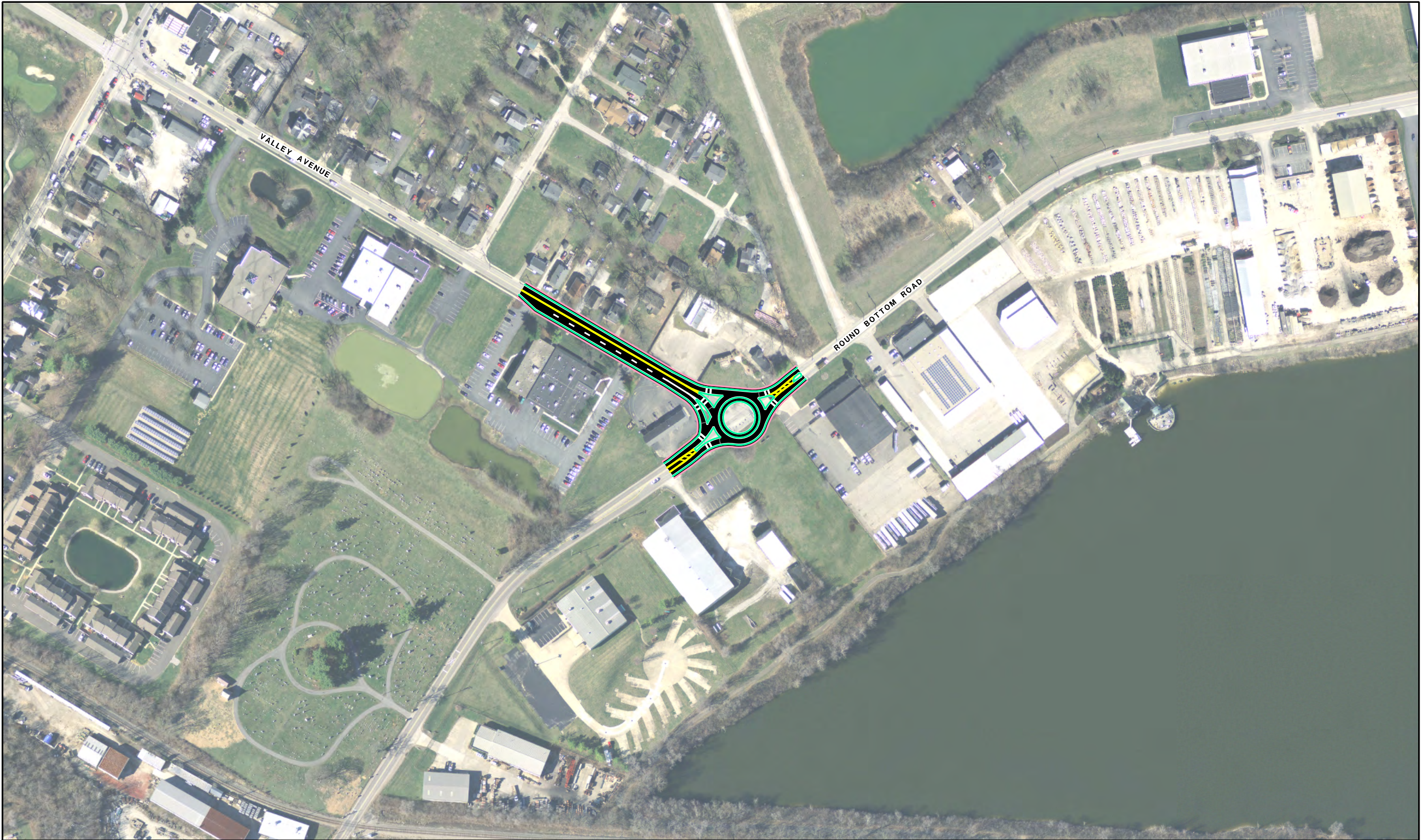


Stantec

Safety	Traffic Operations	Constructability Issues	Construction Cost	R/W Impacts	Environmental / Community Impacts	Support and/or Facilitate Multi-Modal	Improve Regional Connectivity	Improve Local Access

Figure I-8A

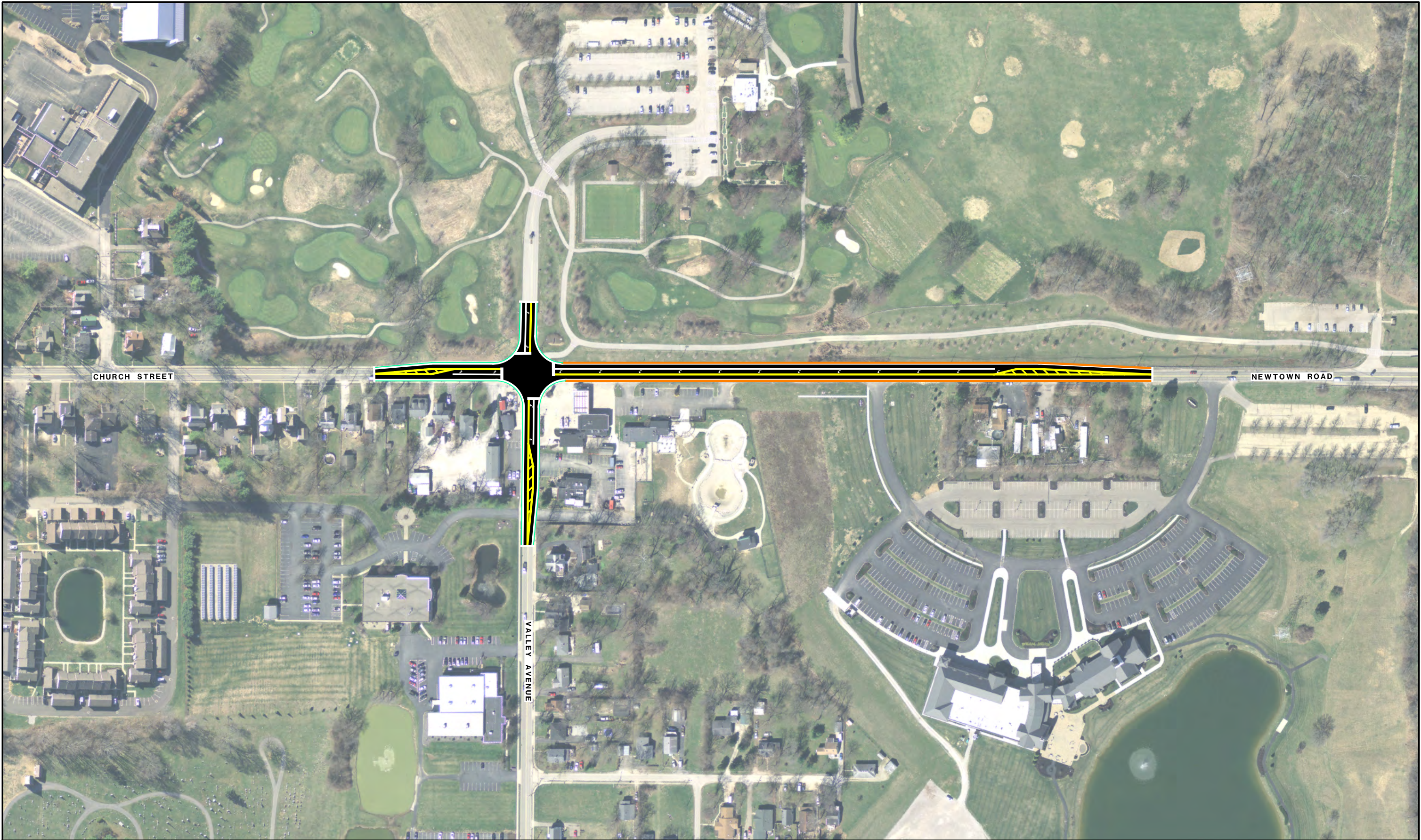
EXTEND STORAGE LENGTH AT THE INTERSECTION OF ROUND BOTTOM ROAD AND VALLEY AVENUE



Stantec

Safety	Traffic Operations	Constructability Issues	Construction Cost	R/W Impacts	Environmental / Community Impacts	Support and/or Facilitate Multi-Modal	Improve Regional Connectivity	Improve Local Access

Figure I-8B
**ROUNDAABOUT AT ROUND BOTTOM ROAD
 AND VALLEY AVENUE INTERSECTION**

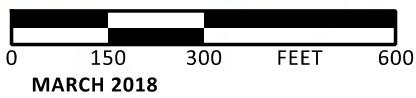
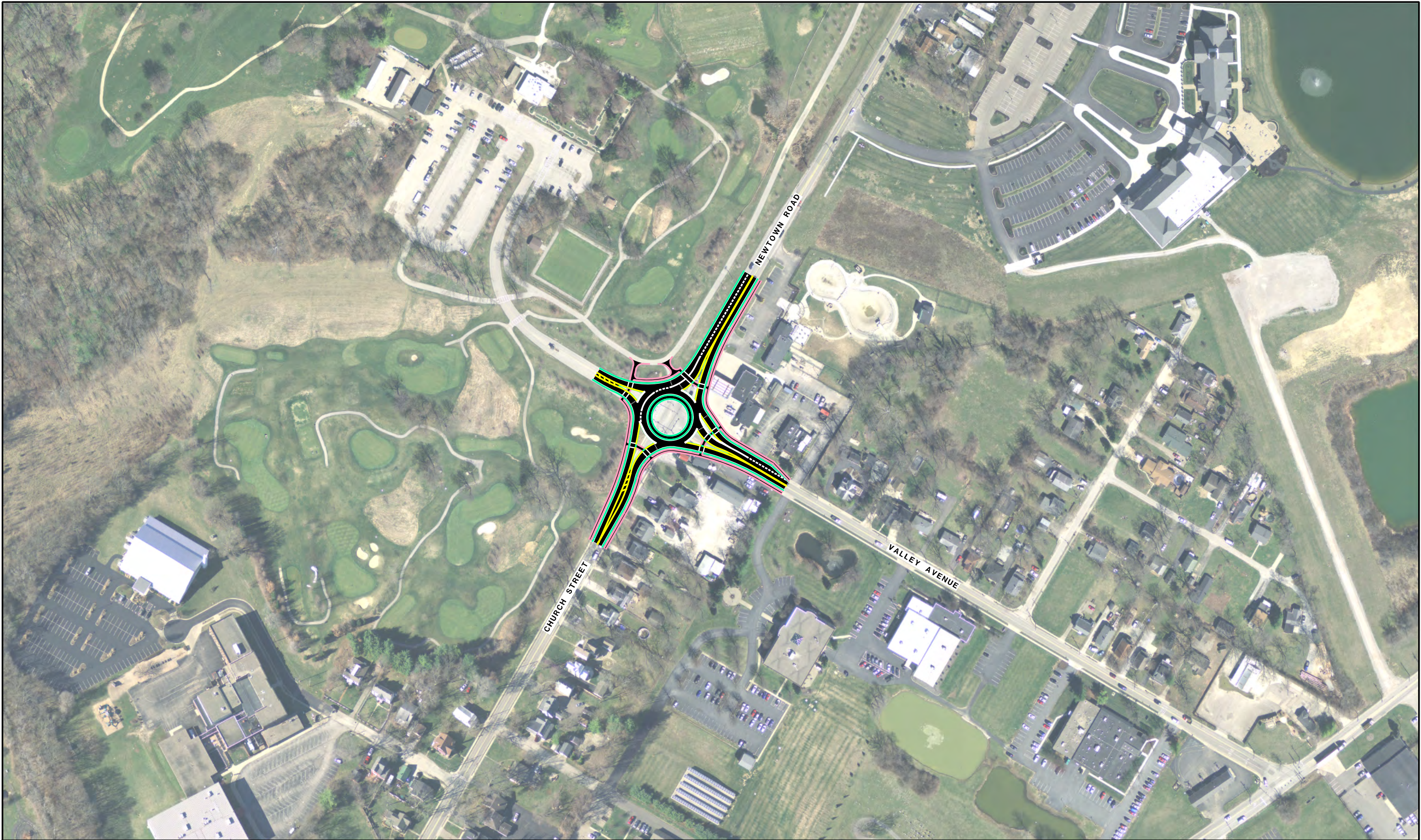


Stantec

Safety	Traffic Operations	Constructability Issues	Construction Cost	R/W Impacts	Environmental / Community Impacts	Support and/or Facilitate Multi-Modal	Improve Regional Connectivity	Improve Local Access

Figure I-10B

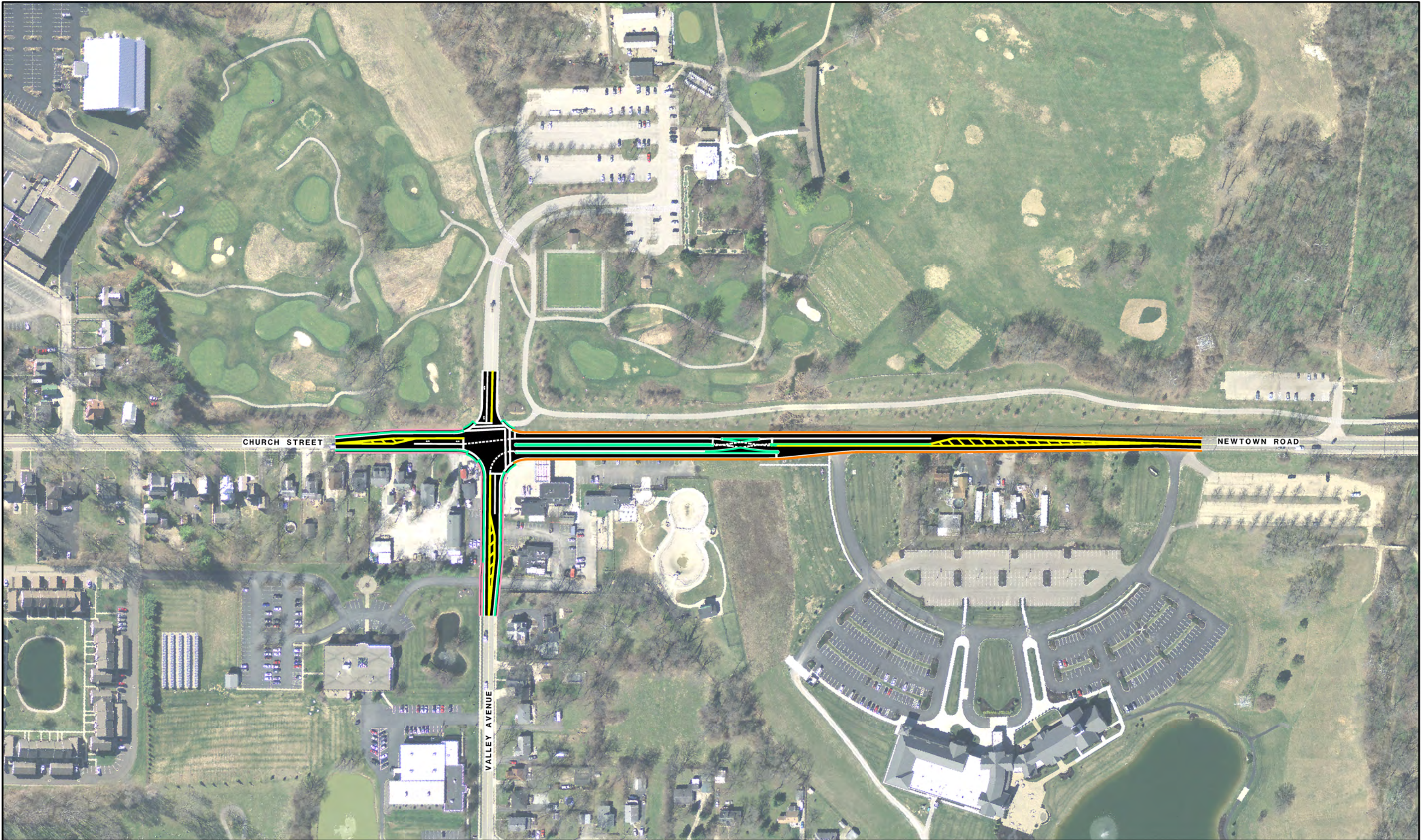
EXTEND STORAGE LENGTH AT THE INTERSECTION OF VALLEY AVENUE AND CHURCH STREET



Stantec

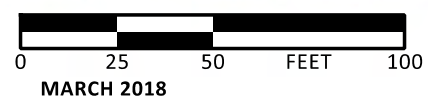
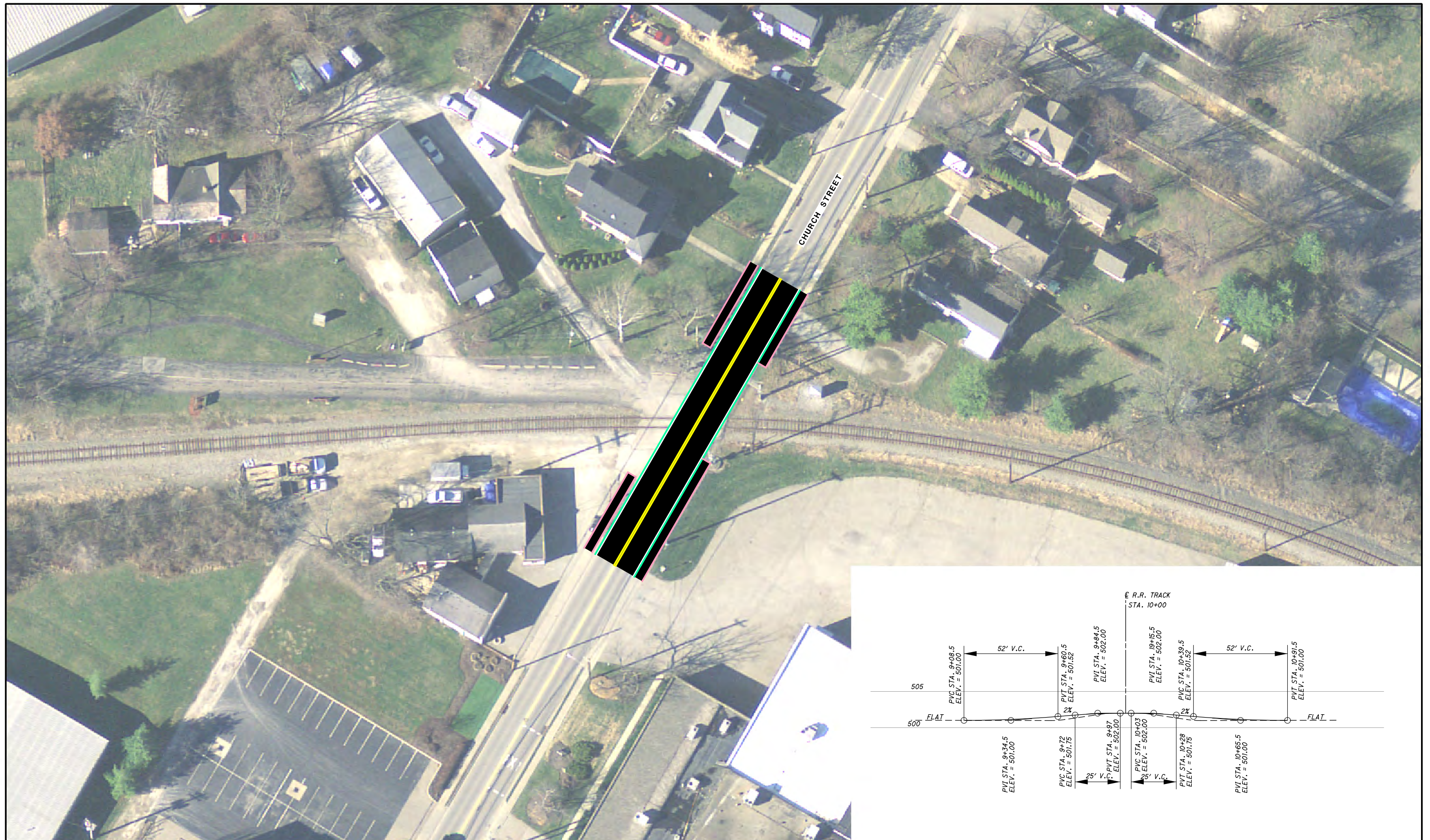
Safety	Traffic Operations	Constructability Issues	Construction Cost	R/W Impacts	Environmental / Community Impacts	Support and/or Facilitate Multi-Modal	Improve Regional Connectivity	Improve Local Access

Figure I-10C
CHURCH STREET, NEWTOWN ROAD
AND VALLEY AVENUE ROUNDABOUT

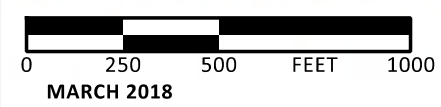


Safety	Traffic Operations	Constructability Issues	Construction Cost	R/W Impacts	Environmental / Community Impacts	Support and/or Facilitate Multi-Modal	Improve Regional Connectivity	Improve Local Access

Figure I-10D
DEFERRED LEFT TURN AT THE INTERSECTION OF
CHURCH STREET AND VALLEY AVENUE



CHURCH-1



Safety	Traffic Operations	Constructability Issues	Construction Cost	R/W Impacts	Environmental / Community Impacts	Support and/or Facilitate Multi-Modal	Improve Regional Connectivity	Improve Local Access

Figure 32-7
 SIDEWALK TO EAST CORPORATION LIMIT



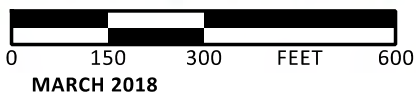
Safety	Traffic Operations	Constructability Issues	Construction Cost	R/W Impacts	Environmental / Community Impacts	Support and/or Facilitate Multi-Modal	Improve Regional Connectivity	Improve Local Access

Figure RB-1
SHARED USE PATH ON ROUND BOTTOM
EAST OF VALLEY AVENUE



Safety	Traffic Operations	Constructability Issues	Construction Cost	R/W Impacts	Environmental / Community Impacts	Support and/or Facilitate Multi-Modal	Improve Regional Connectivity	Improve Local Access

Figure RB-2
SIDEWALK ON ROUND BOTTOM ROAD
BETWEEN S.R. 32 AND VALLEY



Safety	Traffic Operations	Constructability Issues	Construction Cost	R/W Impacts	Environmental / Community Impacts	Support and/or Facilitate Multi-Modal	Improve Regional Connectivity	Improve Local Access

Figure RB-3
SHARED USE PATH CONNECTING
LAKE BARBER WITH LITTLE MIAMI TRAIL
AND RIVERSIDE PARK TO BASS ISLAND